



BOXERCRAFT®
your life. your spirit.™

Our Story...

The Boxercraft brand was born in 1985 on the campus of the University of Virginia on the strength of a single product...the flannel lounge pant. The Boxercraft you are about to see is built upon that very same and very solid foundation but today's Boxercraft has evolved into a collection crafted for comfort and style. It is a collection that embraces a casual lifestyle and the freedom to relax. It is a collection you can count on every day to be a part of your life and celebration of your spirit...maybe it's your school spirit, team spirit, company spirit or your community spirit.

Spring 2022 is built using vibrant colors and exceptional fabrics to create a balanced collection of core wardrobe staples and fashionable additions for your closet. You'll find an updated flannel collection that is the classic representation of that lived-in, comfortable and casual Boxercraft charm that is infused with new colors, patterns and an improved fit. You'll find an expansion of our luxury lounge Cuddle Collection that includes new colors and new styles designed for a day on the sofa or a day around town. You'll find the introduction of our new Men's collection that provides HIM with that same Boxercraft style and intentional companion pieces to our designs for HER. Most importantly, you'll continue to find attention to detail, a commitment to excellence and the value you've come to expect from Boxercraft.

BOXERCRAFT
your life. your spirit.™



Ladies



Cuddle



Flannel



Men



Our Ladies Collection...

When it comes to ladies clothing, we get it. You want feel-good pieces that show your spirited style. Our collection includes tees, fleece, pullovers, pants, hoodies, loungewear and more. They're cozy, comfortable items perfect for relaxing, hanging with friends or chill nights at home. With a fashion-forward attitude, our ladies collection is anything but basic!

BOXERCRAFT
your life. your spirit.™

SEASONAL

BW2101 LADIES TRI-BLEND CREW ^S

MSRP \$24.85

A must-have for every woman's wardrobe, this Tri-blend Crew is anything but basic. With its soft and stretchy poly, cotton and rayon blend, it will be a tee that you'll wear with everything. The self-fabric neck tape and folded neck opening ensure that it will hold its shape over time.

PRODUCT DETAILS

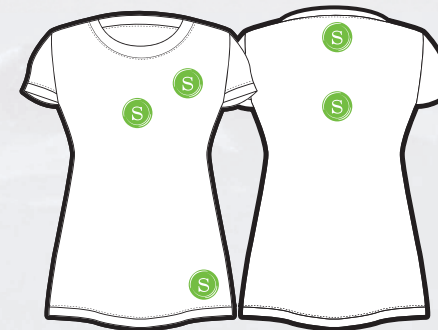
- 4.3 oz., 50% poly, 38% cotton, 12% rayon
- folded self neck opening
- self-fabric neck tape
- machine wash cold; tumble dry low
- made in Guatemala

Sizes: Ladies XXS - 2XL



CLICK FOR
MODEL VIDEO

EMBELLISHMENT PLACEMENTS



AVAILABLE COLORS



GARNET HEATHER
(GRH)



MINT HEATHER
(MNH)



NAVY HEATHER
(NVH)



OXFORD HEATHER
(OXH)



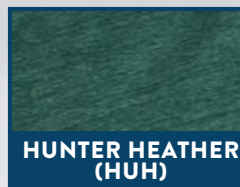
PURPLE HEATHER
(PUH)



ROYAL HEATHER
(RYH)



PALE PINK
HEATHER (PKH)



HUNTER HEATHER
(HUH)



WHITE
(WHT)

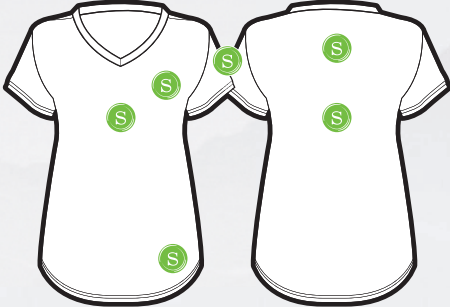


BW2201 LADIES V-NECK TEE S

MSRP \$18.85

Add a pure cotton V-Neck Tee to your collection to mix things up while keeping comfort at the forefront. Simply designed with side-seam construction for a more tailored and flattering silhouette that will pair well with jeans, shorts or anything. The self-fabric back neck tape adds durability.

EMBELLISHMENT PLACEMENTS



PRODUCT DETAILS

- 4.5 oz., 100% cotton
- ribbed V-neck collar
- self-fabric back neck tape
- machine wash cold; tumble dry low
- made in India

Sizes: Ladies XS - 2XL



AVAILABLE COLORS

 BLACK (BLK)	 GRANITE (GNT)	 HOT PINK (HPK)
 MAUVELOUS (MAV)	 NAVY (NAV)	 OXFORD HEATHER (OXH)
 RED (RED)	 ROYAL (ROY)	 WHITE (WHT)
 NATURAL HEATHER (NAH)	 PURPLE (PRP)	





T67 CUT IT OUT TEE S

MSRP \$26.85

Leave them doing a double take as you walk by. It's fun to do in our Cut It Out Tee. The racerback with cutaway detail is slyly flattering, offset by a slightly scooped neck, short sleeves and shirrtail hem. Made of a super soft cotton and poly slub jersey, there's no denying how enjoyable it is to give "back" the attention you deserve.

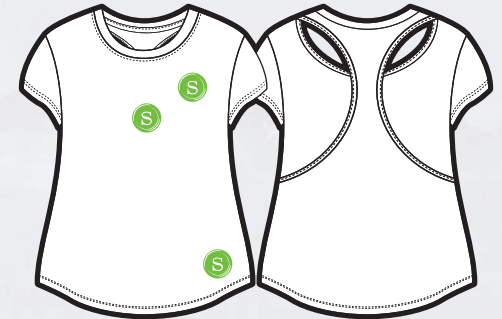
PRODUCT DETAILS

- 4.1 oz., 60% cotton, 40% poly slub jersey
- super soft and flattering
- racerback with cutaway detail
- machine wash cold; tumble dry low
- made in Guatemala

Sizes: Ladies XXS-2XL



EMBELLISHMENT PLACEMENTS



AVAILABLE COLORS

 BLACK (BLK)	 GARNET (GAR)	 NAVY (NAV)
 PURPLE (PRP)	 RED (RED)	 ROYAL (ROY)
 WHITE (WHT)	 OLIVE (OLV)	 TERRACOTTA (TER)
 SAGE (SAG)	 BLUSH (BLS)	





Explore. Dream. Discover.

“Twenty years from now you will be more disappointed by the things you didn’t do than by the ones you did do. So throw off the bowlines. Sail away from the safe harbor. Catch the trade winds in your sails. Explore. Dream. Discover.” - Mark Twain

BOXERCRAFT®
your life. your spirit.™

NEW!

BW2501 ADRIENNE TANK S E

MSRP \$22.85

Designed with workouts in mind, the Adrienne Tank helps you keep your cool while working up a sweat. The cotton-spandex fabric is breathable, with enough stretch to move with you. Features racerback styling and a shirrtail hem for maximum comfort however you choose to move.

PRODUCT DETAILS

- 5.9 oz., 96% cotton, 4% spandex
- racerback detail
- shirrtail hem
- machine wash cold; tumble dry low
- made in China

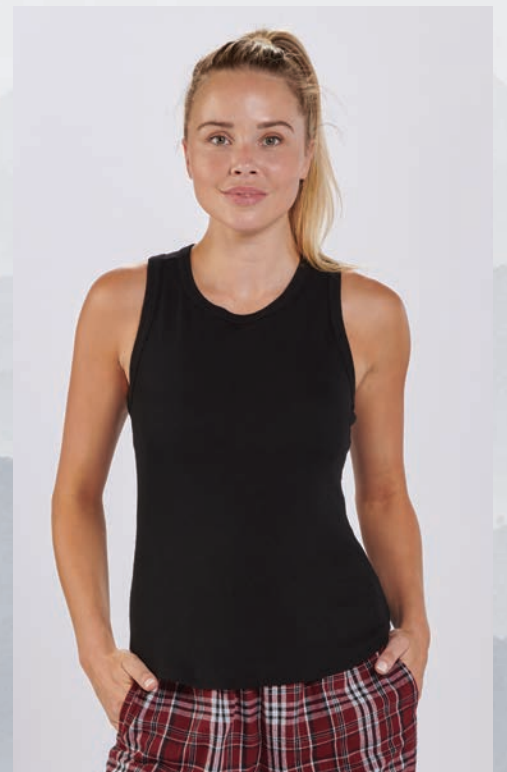
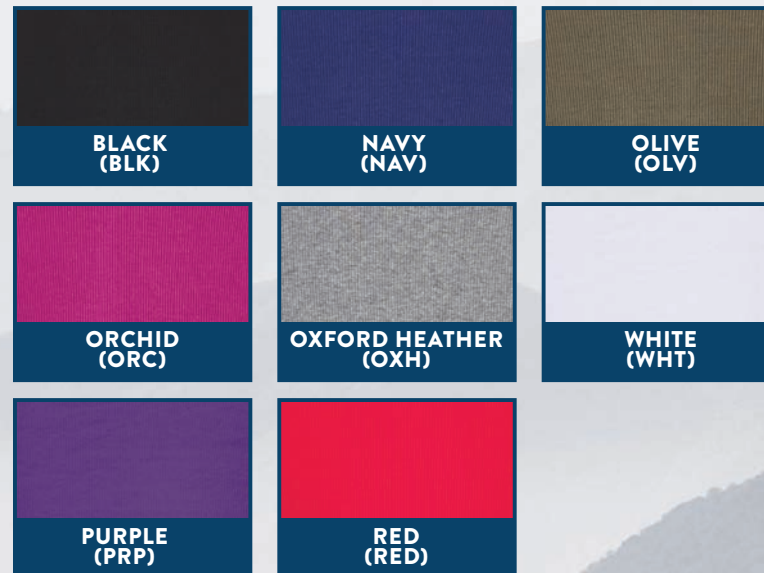
Sizes: Ladies XXS - 2XL



EMBELLISHMENT PLACEMENTS



AVAILABLE COLORS



BW2502/T90 LADIES ESSENTIAL TANK S E

MSRP \$18.85

Essential? Yes. Basic? Definitely not. The cotton blend jersey with a softly brushed finish makes a difference. With a scoop neck and racerback, there's no limit to how you can wear this solid tank top. Pair with shorts. Layer under a deep V sweater. Dress it up with a blazer. Get creative. Stay classic. Just make sure you have plenty of colors on hand.

EMBELLISHMENT PLACEMENTS



PRODUCT DETAILS

- 4.3 oz., 80% polyester, 20% cotton
- self binding at neck and armhole
- Shirttail hem
- machine wash cold with like colors; tumble dry low
- do not bleach
- made in Guatemala

Sizes: Ladies XS - 2XL

AVAILABLE COLORS

T90 BLACK (BLK)	T90 GRANITE (GNT)	T90 MAROON (MAR)
T90 NAVY (NAV)	T90 TRUE RED (TRR)	T90 PURPLE (PUR)
T90 GARNET (GAR)	T90 WHITE (WHT)	BW2502 - NEW SKY BLUE (490)
BW2502 - NEW BLUSH (685)		



NEW!

BW2503 LADIES CHARM TANK S E

MSRP \$24.85

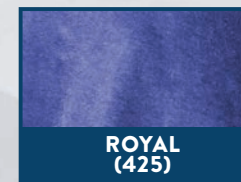
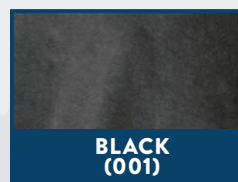
Watch your back! Well what we really mean is...everybody else will be watching. That's because the back detailing on this solid tank is simply captivating. Start with the racerback and go down to the envelope-inspired center back hem. Perfect proportions. The contoured shape, longer hem and deep scoop neck add to the charm.

PRODUCT DETAILS

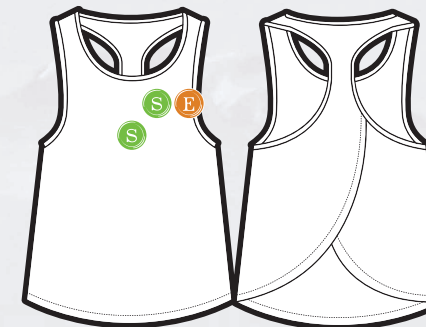
- 4.1 oz., 60% cotton, 40% poly slub jersey
- envelope back center detail
- racerback
- machine wash cold; tumble dry low
- made in Guatemala

Sizes: Ladies XS - 2XL

AVAILABLE COLORS



EMBELLISHMENT PLACEMENTS





Be My friend.

“Don’t walk behind me; I may not lead. Don’t walk in front of me; I may not follow. Just walk beside me and be my friend.” - Albert Camus

BOXERCRAFT®
your life. your spirit.™

NEW!



BW4101 COASTAL COVER UP S E

MSRP \$28.85

With its simple design, our Coastal Cover Up is the perfect accessory for a day at the beach or pool. Cotton-poly fabric is soft, comfortable and easy to slip over your swimsuit. Features a crew neckline and racerback detail for restriction-free movement.

PRODUCT DETAILS

- 4.13 oz., 60% cotton, 40% poly slub jersey
- self-fabric and armhole binding
- crew neckline
- racerback detail
- machine wash cold; tumble dry low
- made in Guatemala

Sizes: Ladies XXS - 2XL



EMBELLISHMENT PLACEMENTS



AVAILABLE COLORS

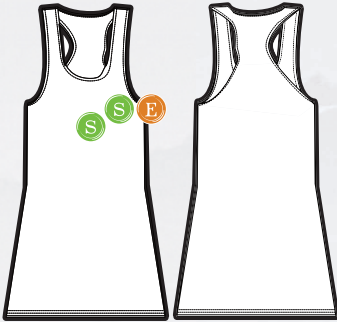


BW4102 CAYDN TANK DRESS S E

MSRP \$28.85

This may be the most versatile piece you add to your wardrobe. Slip on the Caydn Tank Dress and relax in the cool comfort of the 100% cotton design. Wear it alone or dress it up with a jacket. Neck and armholes are finished with self-bias tape for shape retention, with natural shoulder seams for a flattering look.

EMBELLISHMENT PLACEMENTS



PRODUCT DETAILS

- 4 oz., 100% cotton
- neck opening and armholes finished with self-bias tape
- racerback; straight fit
- natural shoulder seam
- machine wash cold; tumble dry low
- made in Guatemala

Sizes: Ladies XXS - 2XL



AVAILABLE COLORS



SEASONAL



NEW!

BW2401 WILLOW TEE S E

MSRP \$28.85

Dare to be a bit different with the flowing style of our Willow Tee. Cotton-poly construction is comfortable in any setting, and the ruffle-layered bottom looks equally great over leggings or denim.

PRODUCT DETAILS

- 4.1 oz., 60% cotton, 40%poly
- back neck tape
- ruffle-layered bottom
- machine wash cold; tumble dry low
- made in Guatemala

Sizes: Ladies XXS - 2XL



EMBELLISHMENT PLACEMENTS



AVAILABLE COLORS

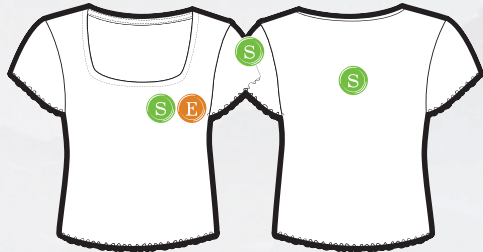


BW2403 BABY RIB TOP S E

MSRP \$28.85

Feminine and flirty, the Baby Rib Top offers cool cotton comfort with just a hint of stretch. Enjoy a contemporary, slightly shorter shirt length with a square neck, lettuce-edge sleeve and bottom. Pair with your favorite jeans for an undeniably adorable style.

EMBELLISHMENT PLACEMENTS



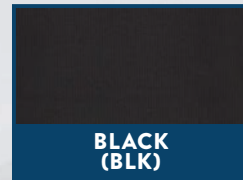
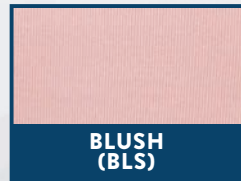
PRODUCT DETAILS

- 5.9 oz., 96% cotton, 4% spandex
- square neckline
- self-fabric back neck tape
- lettuce edge sleeve and bottom opening
- top of waistband body length
- machine wash cold; tumble dry low
- made in China

Sizes: Ladies XXS - 2XL



AVAILABLE COLORS





BW3166 PAYTON TEE S E

MSRP \$28.85

Beyond basic for so many reasons. Simple, stylish and made to move at the speed of life, the Payton Tee is a solid twist on our popular Preppy Patch Tee. It feels super soft and looks super cute in a slub jersey with contrast color detail at shoulders (front and back) and elbow patches.

PRODUCT DETAILS

- 4.1 oz., 60% cotton, 40% poly slub jersey
- 1x1 rib neckline and sleeve cuff
- self-fabric back neck tape
- contrast colored seams and elbow patches
- machine wash cold; tumble dry low
- made in Guatemala

Sizes: Ladies XXS-2XL



EMBELLISHMENT PLACEMENTS



AVAILABLE COLORS



BLACK
(BLK)



GRANITE
(GNT)



OXFORD
(OXH)



INDIGO
(IND)



OLIVE
(OLV)



WHITE
(WHT)



GARNET
(GAR)



NAVY
(NAV)



RED
(RED)



ROYAL
(ROY)





Adventure.

“Love, like everything else in life, should be a discovery, an adventure, and like most adventures, you don’t know you’re having one until you’re right in the middle of it.” - E.A. Bucchianer

BOXERCRAFT®
your life. your spirit.™



T14 POM POM JERSEY ^S

MSRP \$34.85

Give a loud cheer for your new favorite jersey. With double stripes on sleeves for athletic style, and a roomy, oversized fit for extra comfort, this all-cotton jersey is a winning look, layered or not. Rib knit at cuffs and crew neck. Lift up your team spirit in our long-sleeve Pom Pom Jersey.

PRODUCT DETAILS

- 5.5 oz., 100% cotton ringspun jersey
- relaxed, oversize fit
- double athletic sleeve stripes
- machine wash cold; tumble dry low
- made in Guatemala



Sizes: Ladies XS - 2XL

*Oxford is 90/10 cotton/poly **Charcoal is 60/40 cotton/poly

AVAILABLE COLORS

 BLACK (BLK)	 CHARCOAL (CHA)	 WHITE (WHT)	 PURPLE/OXFORD (POX)
 OXFORD (OXF)	 PERIWINKLE (PER)	 PURPLE (PRP)	 NAVY/OXFORD (NOX)
 ROYAL (ROY)	 TEAL (TEL)	 BLACK/OXFORD (BOX)	 ROYAL/BLACK (RYB)
 NAVY (NAV)	 RED (RED)	 GARNET/OXFORD (GOX)	 RED/BLACK (RBL)

EMBELLISHMENT PLACEMENTS

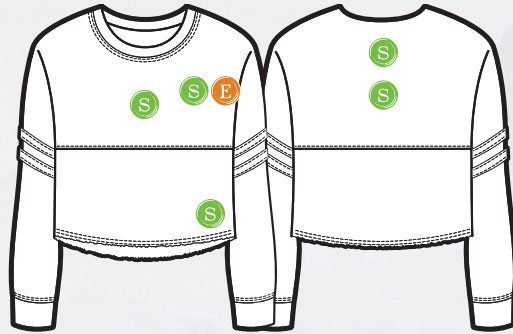


T15 CROPPED RETRO JERSEY S E

MSRP \$34.85

The long admired jersey lives on, but this time to fit your spirited lifestyle. With a flattering crop top shape, double athletic sleeve stripes, top-stitched mid-chest seam, and raw-edge flatlock-stitch detail, this all-cotton jersey is a champion wherever you go.

EMBELLISHMENT PLACEMENTS



PRODUCT DETAILS

- 5.5 oz., 100% cotton ringspun jersey
- relaxed, oversize fit
- double athletic sleeve stripes
- machine wash cold; tumble dry low
- made in Guatemala

Sizes: Ladies XS - 2XL

*Oxford is 90/10 cotton/poly



AVAILABLE COLORS



BLACK
(BLK)



BLACK/OXFORD
(BOX)



NAVY/OXFORD
(NOX)



OXFORD*
(OXF)



RED/BLACK
(RBL)



WHITE
(WHT)



PURPLE/OXFORD
(POX)





NEW!

BW2402 HARPER HENLEY ^E

MSRP \$34.85

With the Harper Henley, we've taken a classic style and updated it with feminine appeal. Pure cotton softness has a shot of spandex for stretchable, easy comfort. Twill back neck tape and twill tape on the placket are a casual accent, while antique silver snaps are just the thing to set this shirt apart.

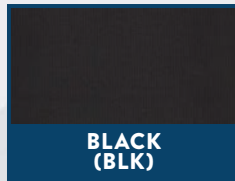
PRODUCT DETAILS

- 5.9 oz., 96% cotton, 4% spandex
- square neckline
- twill back neck tape and twill tape centerfront placket
- antique snaps
- machine wash cold; tumble dry low
- made in China



Sizes: Ladies XXS - 2XL

AVAILABLE COLORS



BLACK
(BLK)



NAVY
(NAV)



OLIVE
(OLV)



ORCHID
(ORC)

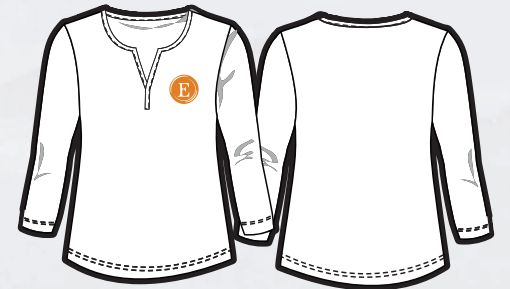


OXFORD HEATHER
(OXH)



WHITE
(WHT)

EMBELLISHMENT PLACEMENTS

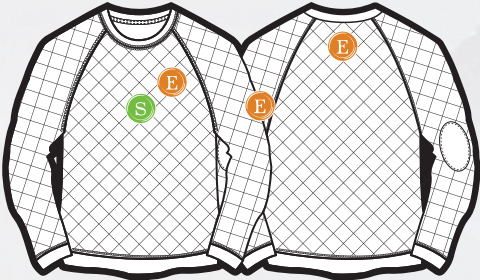


R08 QUILTED CREW S E

MSRP \$59.85

Bye bye boring sweatshirt. Hello Quilted Crew. The all-over diamond quilting not only looks stylish, it adds warmth. The raglan sleeves help you move more freely, while the tonal elbow patches show off a retro vibe. Rib knit at crewneck, cuffs and bottom hem. Layered or not, this is the pullover to call on again and again.

EMBELLISHMENT PLACEMENTS



PRODUCT DETAILS

- 4.1 oz., 60% cotton, 40% poly jersey; 1.8 oz., 100% poly fill
- sweatshirt / jersey hybrid
- quilting adds style and warmth
- wash before wearing; machine wash cold; tumble dry low
- made in China



Sizes: Ladies XXS-2XL

AVAILABLE COLORS

 BLACK (BLK)	 INDIGO (IND)	 NATURAL (NAT)
 OXFORD (OXF)	NEW!  OLIVE (OLV)	NEW!  ORCHID (ORC)
SEASONAL  TERRACOTTA (TER)	SEASONAL  CARAMEL (CRL)	



Our Cuddle Story...

What's in a name? When it comes to our Cuddle Collection, it's everything. These are some of the softest, coziest, and most versatile pieces you'll find, and they're perfect for everyday comfort. Each piece in the collection is made from Hacci fabric, with a loopy, brushed knit texture that is soft like a sweater, but it's lighter, more stretchable and goes more places. Everyone loves a good cuddle!

BOXERCRAFT®
your life. your spirit.™

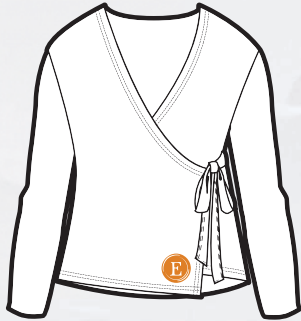


BW1301 CUDDLE WRAP TOP ^E

MSRP \$64.85

When it's cuddle weather outside, the Cuddle Wrap Top gives you cuddle vibes anytime you want them. Ultra soft, warm and stretchy fabric literally wraps you in cozy comfort. A wide, circular knit tie closure threads through a hole set on the right side for a perfect wrap. With self-fabric binding at the neck, and 2x2 rib cuffs that hold their shape throughout the day.

EMBELLISHMENT PLACEMENTS



PRODUCT DETAILS

- 6.2 oz., 80% viscose, 17% polyester, 3% elastane
- self-fabric back neck opening
- wide, circular knit tie closure
- 2x2 rib cuffs
- hole set on wearer's right side seam to thread tie closure through
- machine wash cold; tumble dry low
- made in China

Sizes: Ladies XXS - 2XL



AVAILABLE COLORS



BLACK HEATHER
(BLA)



BLUSH HEATHER
(BHS)



NAVY HEATHER
(NVH)



OATMEAL HEATHER
(OMH)



OXFORD HEATHER
(OXH)



SAGE HEATHER
(SAH)

NEW!



NEW!

BW1501 CUDDLE HOODIE S

MSRP \$58.85

What's in a name? In this case, it's everything! Our Cuddle Hoodie is a cozy layer constructed of viscose, poly and a bit of elastane for ultimate comfort and a just-right amount of stretch. It has a hood with wide, tubular drawcords for adjustability. 2x2 folded rib bottom opening and sleeve cuffs hold their shape wear after wear.

PRODUCT DETAILS

- 6.2 oz., 80% viscose, 17% polyester, 3% elastane
- 1 ply, 2 piece hood
- self-fabric back neck tape
- 2x2 folded rib bottom opening band and sleeve cuffs
- kanga pocket & wide, tubular knit drawcords
- machine wash cold; tumble dry low
- made in China



Sizes: Ladies XXS - 2XL

AVAILABLE COLORS



EMBELLISHMENT PLACEMENTS

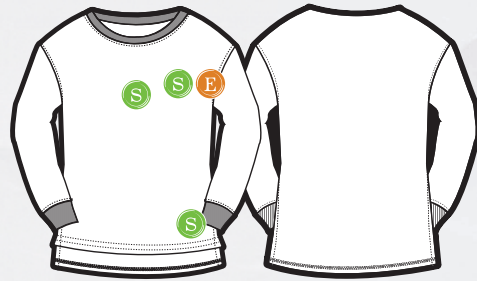


L06 CUDDLE BOXY CREW S E

MSRP \$44.85

A gentle cuddle can put you in your happy place. Grab hold of that feeling any day, any time in our Cuddle Boxy Crew made of crazy-soft Hacci fabric. And you think, huh? What's Hacci? It's a loopy, open knit texture that's as soft as a sweater, but more like a comfy sweatshirt. Only it's lighter, cozier, more stretchable and goes more places. The perfect casual chic hybrid in a loose and flowy fit with a flattering high-low vented hem and brushed finish. Our long-sleeve solid pullover is ready to cuddle. Are you?

EMBELLISHMENT PLACEMENTS



PRODUCT DETAILS

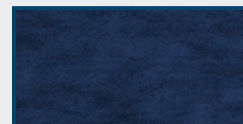
- 6.2 oz., 80% viscose, 17% poly, 3% elastane knit
- sweater / sweatshirt hybrid
- rib knit at crewneck and cuffs
- machine wash cold; tumble dry low
- made in China

Sizes: Ladies XS - 3XL

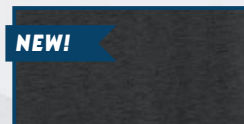
AVAILABLE COLORS



OXFORD HEATHER
(OXH)



NAVY HEATHER
(NVH)



NEW!

BLACK HEATHER
(BLA)



NEW!

OATMEAL HEATHER
(OMH)



NEW!

BLUSH HEATHER
(BHS)



NEW!

SAGE HEATHER
(SAH)





L08 CUDDLE CARDIGAN S

MSRP \$54.85

Think about the softest, most versatile cardigan you could ever own. Here you go. Our Cuddle Hooded Cardigan is made from Hacci fabric. It's a loopy, brushed knit texture that's as soft as a sweater and as comfortable as a sweatshirt. Only it's lighter, cozier, more stretchable and goes more places. It's the perfect tunic-length with an open front style that gently drapes into a relaxed fit. Deep front pockets, side vents and a hood enhance the look. Go ahead, cuddle up in your new favorite cardigan.

PRODUCT DETAILS

- 6.2 oz., 80% viscose, 17% poly, 3% elastane knit
- super soft with stretch comfort
- versatile tunic length
- machine wash cold; tumble dry low
- made in China

Sizes: Ladies XS - 3XL



EMBELLISHMENT PLACEMENTS



AVAILABLE COLORS



OXFORD HEATHER
(OXH)



BLACK HEATHER
(BLA)



L09 CUDDLE JOGGER S F

MSRP \$44.85

Beyond average joggers, these pants are made of crazy-soft Hacci fabric. It's a loopy, open knit texture that feels as soft as a sweater, and functions more like comfy sweat pants. Only lighter, cozier, more stretchable and goes more places. The perfect casual chic hybrid. The self-fabric waistband adjusts to fit just right with a knotted drawcord, while the ribbed cuffs keep the cold out. These joggers are ready to cuddle. Are you?

EMBELLISHMENT PLACEMENTS



PRODUCT DETAILS

- 6.2 oz., 80% viscose, 17% poly, 3% elastane knit
- sweater softness
- self-fabric waistband with drawcord
- machine wash cold; tumble dry low
- made in China

Sizes: Ladies XS - 2XL



AVAILABLE COLORS



OXFORD HEATHER
(OXH)



NAVY HEATHER
(NVH)



BLACK HEATHER
(BLA)



BLUSH HEATHER
(BHS)



SAGE HEATHER
(SAH)





L10 CUDDLE WIDE LEG PANT S E

MSRP \$44.85

Goodbye boring sweatpants, hello Cuddle Wide Pant. The ultra-soft and lightweight knit fabric gently cuddles your skin, giving you a good reason to be happy. You'll quickly like the relaxed and flowy silhouette with a hint of stretch for extra comfort. With a two-tone heather effect and a crazy-soft finish, be ready to cuddle in style (indoors or out).

PRODUCT DETAILS

- 6.2 oz., 80% viscose, 17% poly, 3% elastane knit
- super soft with stretch comfort
- self-fabric waistband with adjustable drawcord
- machine wash cold; tumble dry low
- made in China

Sizes: Ladies XS - 2XL



AVAILABLE COLORS

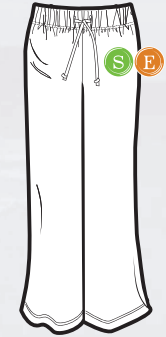


OXFORD HEATHER
(OXH)



BLACK HEATHER
(BLA)

EMBELLISHMENT PLACEMENTS



L11 CUDDLE SHORT S F

MSRP \$30.85

A gentle cuddle can quickly put you in your happy place. Grab hold of that feeling in our Cuddle Short of crazy-soft Hacci fabric. And you think, huh? What's Hacci? It's a loopy, open knit texture with subtle stretch and a brushed finish that feels so good against the skin. Adjust the fit with a twill drawcord waist. And if you want the perfect outfit, pair with a Cuddle Boxy Crew.

EMBELLISHMENT PLACEMENTS



PRODUCT DETAILS

- 6.2 oz., 80% viscose, 17% poly, 3% elastane knit
- super soft with stretch comfort
- self-fabric waistband with adjustable drawcord
- machine wash cold; tumble dry low
- made in China

Sizes: Ladies XS - 2XL



AVAILABLE COLORS



OXFORD HEATHER
(OXH)



NEW!

NAVY HEATHER
(NVH)



NEW!

BLACK HEATHER
(BLA)





L12 CUDDLE COWL PULLOVER S E

MSRP \$48.85

When cold season strikes, make sure the Cuddle Cowl Pullover is in your rotation. It's made of crazy-soft Hacci fabric; a loopy knit texture with subtle stretch and a brushed finish that feels so good against the skin. We think you'll agree that the twill drawcord on the cowl neck is a really cool feature that you can adjust to your exact liking. And who doesn't like a kangaroo pocket, a shirrtail hem and cuffs with thumbholes? So come on, it's time to Cuddle.

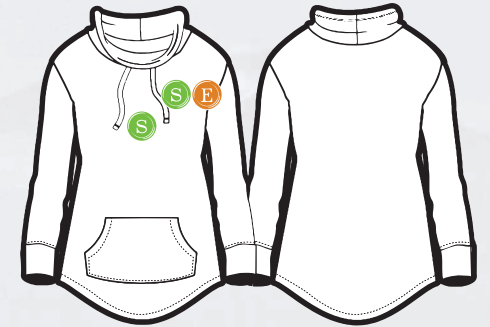
PRODUCT DETAILS

- 6.2 oz., 80% viscose, 17% poly, 3% elastane knit
- cowl neck with twill drawcord
- rib cuffs with thumb holes
- machine wash cold; tumble dry low
- made in China

Sizes: Ladies XS - 3XL



EMBELLISHMENT PLACEMENTS



AVAILABLE COLORS





Learn. Live. Hope.

"And now I'll just go, and only worry about the events that lie ahead of me. Day by day, one by one. It is the here and now that counts. What comes next is uncertain in any case. Learn from yesterday, live for today, hope for tomorrow." - Ueli Steck

BOXERCRAFT[®]
your life. your spirit.™

NEW!

BW5201 DREAM FLEECE FULL ZIP HOOD S E

MSRP \$64.85

The Dream Fleece Full-Zip Hoodie will forever change the way you feel about this essential cool weather piece. It feels so good, so soft, from the moment you put it on that it really is like wearing a dream! Features include a 2-ply lined hood, self-fabric drawcords and metal grommets for the drawcord exit. Concealed zipper teeth. Convenient kanga pocket to keep hands warm. 1x1 rib on bottom band and sleeve cuffs.

PRODUCT DETAILS

- 6.9 oz., 59% poly, 35% rayon, 6% spandex
- Self-fabric drawcords finished with knotted ends
- metal grommet for drawcord exit
- 2 piece 2 ply lined hood
- concealed zipper teeth • kanga pocket
- machine wash cold; tumble dry low
- made in China

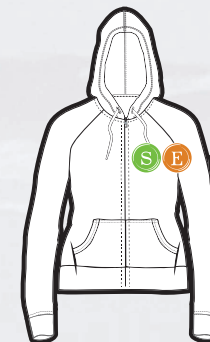


Sizes: Ladies XXS - 2XL

AVAILABLE COLORS



EMBELLISHMENT PLACEMENTS



BW5301 DREAM FLEECE PULL OVER HOOD S E

MSRP \$58.85

Slip into our Dream Fleece Pullover Hoodie, and feel the dreamy softness and warmth. The scallop-shaped bottom lends this pullover a feminine look. With a lined hood, antique silver 20L grommets for the drawcord exit, and 1x1 ribbed sleeve openings, it will be a cool weather favorite.

EMBELLISHMENT PLACEMENTS



PRODUCT DETAILS

- 6.9 oz., 59% poly, 35% rayon, 6% spandex
- 2-piece, 2-ply lined hood
- scallop-shaped bottom opening
- machine wash cold; tumble dry low
- made in China

Sizes: Ladies XXS - 2XL

AVAILABLE COLORS



BLACK HEATHER
(BLA)



INDIGO HEATHER
(INH)



ORCHID HEATHER
(OCH)



OXFORD HEATHER
(OXH)



PURPLE HEATHER
(PUH)



RED HEATHER
(RHT)



BLUE HEATHER
(BTH)

NEW!



NEW!



BW6601 DREAM FLEECE PANT S E

MSRP \$44.85

Complete your dreamy fleece feeling with the Dream Fleece Pant. Soft and warm poly-rayon construction with straight leg styling offers a flattering silhouette. 1x1 folded rib waistband with elastic set through center has a self-fabric tubular drawcord finished with knotted ends.

PRODUCT DETAILS

- 6.9 oz., 59% poly, 35% rayon, 6% spandex
- straight leg styling
- slash pockets with jersey pocket bags
- machine wash cold; tumble dry low
- made in China

Sizes: Ladies XXS - 2XL



EMBELLISHMENT PLACEMENTS



AVAILABLE COLORS



BLACK HEATHER
(BLA)



INDIGO HEATHER
(INH)



ORCHID HEATHER
(OCH)



OXFORD HEATHER
(OXH)



S08 LOVE 'EM LONGER LEGGING ^S

MSRP \$20.85 LADIES/\$16.85 YOUTH

Of course, leggings are a necessity, but they're not all built the same. Ours are smoothly knit and packed with plenty of stretch, but not a struggle to pull on. The elasticized waist falls mid-rise, and not jacked up above your waist like many others. Most important, you'll Love'em Longer...full length and versatile enough to wear with thigh-high boots or slip-on sneakers.

EMBELLISHMENT PLACEMENTS



PRODUCT DETAILS

- 6.5oz., 90% cotton, 10% spandex
- full length
- mid-rise waist
- machine wash cold; tumble dry low
- made in Guatemala

Sizes: Ladies XS - 2XL. Youth YS - YL



AVAILABLE COLORS



NEW!



BW6615 EVELYN PANT ^S

MSRP \$36.85

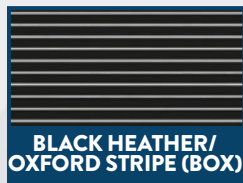
Perfect for everyday casual, the Evelyn Pant will be an instant favorite. Soft poly, rayon and cotton blend fabric has a shirred waistband with ruffle header and forward side seam for an ultra-feminine look. Side-seam pockets have self pocket bags.

PRODUCT DETAILS

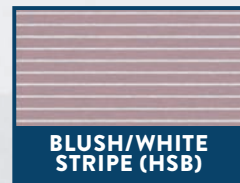
- 4.3 oz., 60% poly, 28% rayon, 12% cotton
- Shirred waistband with ruffle header
- forward side seam
- side seam pockets with self pocket bags
- made in china

Sizes: Ladies XS - 2XL

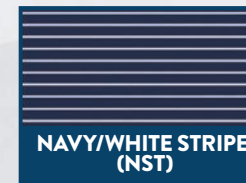
AVAILABLE COLORS



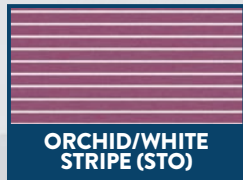
BLACK HEATHER/
OXFORD STRIPE (BOX)



BLUSH/WHITE
STRIPE (HSB)



NAVY/WHITE STRIPE
(NST)



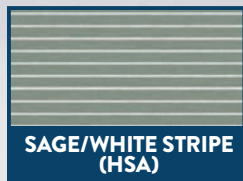
ORCHID/WHITE
STRIPE (STO)



OXFORD/WHITE
STRIPE (OXW)

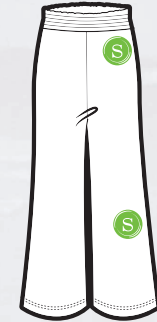


ROYAL/WHITE
STRIPE (ROW)



SAGE/WHITE STRIPE
(HSA)

EMBELLISHMENT PLACEMENTS



BW6301 LUNA LEGGING ^S

MSRP \$48.85

Live in them. Play in them. Love them. The Luna Legging proves that with the right leggings, you can do most anything! The poly-spandex construction moves with you and gives plenty of comfortable support. With a front waistband pocket, seamed panels and mesh side-panel pocket for added convenience.

EMBELLISHMENT PLACEMENTS



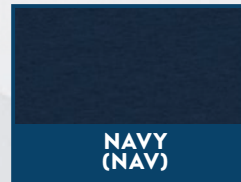
PRODUCT DETAILS

- 6.8 oz., 92% poly, 8% spandex
- front waistband pocket with lightweight pocket bag
- mesh side panel pocket
- machine wash cold; tumble dry low
- made in China

Sizes: Ladies XXS - 2XL



AVAILABLE COLORS





S101 SUPPORT YOUR TEAM BRA S

MSRP \$14.85 LADIES/\$12.85 YOUTH

This all-sports bra is a favorite for comfort and versatility. Wear it solo, paired with joggers or shorts. Layer it under a tee. The possibilities are boundless. So soft in cotton with spandex for added stretch and shape retention.

PRODUCT DETAILS

- 6.5 oz., 90% cotton, 10% spandex
- versatile sport bra styling
- racerback detail
- machine wash cold; tumble dry low
- made in Guatemala

Sizes: Ladies S - XL, Youth YS - YL



CLICK FOR
MODEL VIDEO

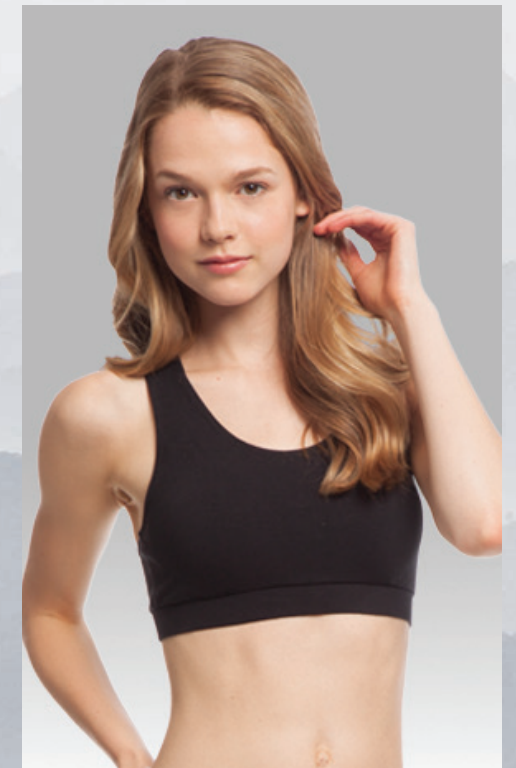


AVAILABLE COLORS



BLACK
(BLA)

EMBELLISHMENT PLACEMENTS





friendship.

"Friendship is the hardest thing in the world to explain. It's not something you learn in school. But if you haven't learned the meaning of friendship, you really haven't learned anything." - Muhammad Ali

BOXERCRAFT[®]
your life. your spirit.™



BW6101 OLYMPIA SHORT S E

MSRP \$32.85

The Olympia Short is a must for casual days or workout days. 100% poly construction has a folded waistband with the side seam set forward. Overlapping front and back side seam panels create a scallop-shaped leg opening.

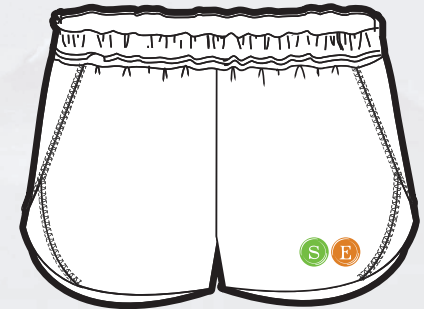
PRODUCT DETAILS

- 2.5 oz., 100% poly
- folded waistband
- scallop-shaped leg opening
- machine wash cold; tumble dry low
- made in China

Sizes: Ladies XXS - 2XL



EMBELLISHMENT PLACEMENTS



AVAILABLE COLORS



BLACK
(BLK)



NAVY
(NAV)



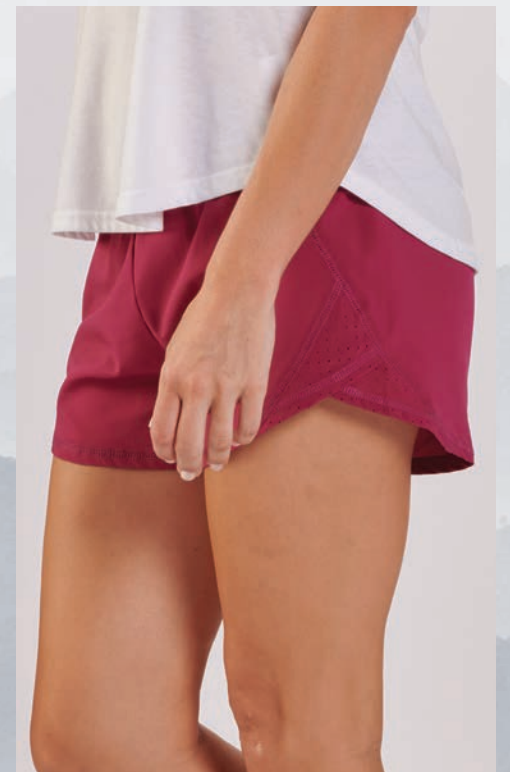
OLIVE
(OLY)



ORCHID
(ORD)



SLATE
(SLT)

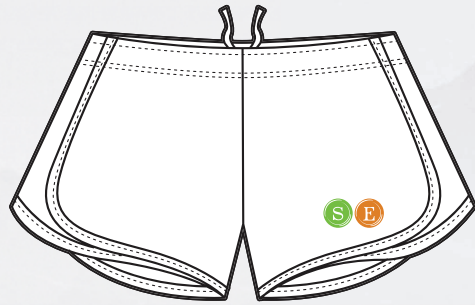


BW6102 LADIES SPORT SHORT S E

MSRP \$24.85

Running, walking or strength training, they're all better when wearing our Basic Sport Short. This poly short has a white mesh side panel, with bindings that match the body color, and a mesh liner and coin pocket.

EMBELLISHMENT PLACEMENTS



PRODUCT DETAILS

- 2.4 oz., 100% poly
- white mesh side panel
- bindings matching body color
- mesh liner & coin pocket
- machine wash cold with like colors • do not iron
- do not bleach • tumble dry low
- made in Guatemala

Sizes: Ladies XXS - 2XL

AVAILABLE COLORS



BLACK/WHITE
(BKW)



GREY/WHITE
(GYW)



HUNTER/WHITE
(HUW)



NAVY/WHITE
(NVW)



PURPLE/WHITE
(PRW)



RED/WHITE
(RDW)



ROYAL/WHITE
(ROW)

NEW!





K11 RALLY SHORT S E

MSRP \$26.85/\$22.85 YOUTH

It's time to Rally. We're talking about a spirited fleece short with lived-in softness from day one. With a special enzyme and stone wash process, our essential solid short rivals any vintage look. The wide elasticized waist won't bind or twist, and it adjusts to fit just right with a 3/8" natural colored rope cord. The side pockets always come in handy. Go on, team up with the Rally Short with your favorite tee for a winning look every time.

PRODUCT DETAILS

- 6.5 oz., 60% cotton, 40% poly fleece
- stone washed for a vintage feel
- adjust the fit with a 3/8" rope cord
- machine wash cold; tumble dry low
- made in China

Sizes: Ladies XS - 2XL. Youth YS-YL



CLICK FOR
MODEL VIDEO



AVAILABLE COLORS



EMBELLISHMENT PLACEMENTS



R65 RELAY SHORT S

MSRP \$24.85

On the track. At the beach. Close to home. You name it. You'll always want the Relay Short at the ready. In skin-sational French terry with a full elastic waist, contrast twill drawcord and jersey trim, this pair is made to be your go-to active shorts.

EMBELLISHMENT PLACEMENTS



PRODUCT DETAILS

- 8.3 oz., 70% cotton, 30% poly French terry
- 2-1/2" inseam on size Small, 2-3/4" on Medium
- elastic waist with drawcord
- machine wash cold; tumble dry low
- no drawcords on youth
- made in China



Sizes: Ladies XS - 2XL

AVAILABLE COLORS



BLACK/WHITE
(BKW)



GRANITE/WHITE
(GNW)



NAVY/WHITE
(NVW)



RED/WHITE
(RDW)





K01S/K01P FLEECE OUT CREW S E

MSRP \$49.85 (K01S)/\$55.85 (K01P)

Our soft-washed, reverse fleece pullover feels and looks so good, you'll never want to take it off. The fleece typically seen on the inside is sewn on the outside, elevating the snuggle factor. Retains shape with rib knitting at crewneck, cuffs and vented bottom hem. It's time to "Fleece Out" your way!

PRODUCT DETAILS

- 6.5 oz., 60% cotton, 40% poly reverse fleece
- snugly soft on the outside
- boxy fit with bottom side vents
- machine wash cold; tumble dry low
- made in China

Sizes: Ladies XXS - 2XL



EMBELLISHMENT PLACEMENTS



AVAILABLE COLORS

 CHARCOAL (K01S CHA)	 NAVY (K01S NAV)	 NAVY TIE-DYE (K01P NTD)
 NATURAL (K01S NAT)	 NEW! RED (K01S RED)	 NEW! PURPLE (K01S PRP)
 NEW! ROYAL (K01S ROY)	 NEW! ORCHID (K01S ORC)	 NEW! OLIVE (K01S OLV)
 SEASONAL BLUSH (K01S BLS)	 SEASONAL SAGE (K01S SAG)	



K02S FLEECE SHORT S E

MSRP \$29.85

Sometimes it's better to go in reverse. That's certainly the case in our reverse fleece short. A comfy seam-folded waistband stays put and adjusts, thanks to a tubular braided drawcord. Find handy slash pockets, plus an old-school coin pocket. Scalloped shaping and raw edges give the leg openings a bit more oomph.

EMBELLISHMENT PLACEMENTS



PRODUCT DETAILS

- 6.5 oz., 60% cotton, 40% poly reverse fleece
- snugly soft on the outside
- seam-folded waist with braided drawcord
- machine wash cold; tumble dry low
- made in China



Sizes: Ladies XXS - 2XL

AVAILABLE COLORS



SEASONAL

BW8101 LADIES ADVENTURE JACKET ^E

MSRP \$88.85

Our Adventure Jacket lives up to its name while it keeps you ready for all of life's many adventures. The quilted poly shell has woven arms for stretchable comfort and flexibility, while delivering lightweight warmth and protection. Features a zippered chest pocket, and side-seam pockets with lightweight pocket bags.

PRODUCT DETAILS

- Body: 1.5 oz., 100% poly; Woven sleeves: 11.2 oz., 68% rayon, 28% chinlon, 4% spandex; Fill: 3 oz., 100% poly
- 3-ply body with fiber fill
- zippered chest pocket; side-seam pockets
- machine wash cold; tumble dry low
- made in China

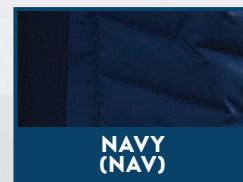
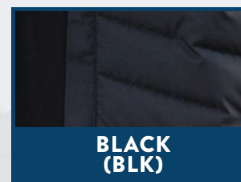
Sizes: Ladies XXS - 2XL



EMBELLISHMENT PLACEMENTS



AVAILABLE COLORS



BW8102 QUILTED MARKET JACKET ^E

MSRP \$84.85

The right jacket makes all the difference. Our Market Jacket keeps you toasty while looking stylish. A woven outer has 100% poly fill for extra warmth. Features a rolled sleeve cuff that is secured with a tack, antique brass snaps, and welt pockets with soft jersey pocket bags to warm the hands or hold essentials.

EMBELLISHMENT PLACEMENTS



PRODUCT DETAILS

- 3.4 oz., Woven fabric (navy) 70% cotton, 30% poly; (black) 100% cotton; Fill: 100% poly
- self-fabric binding and twill back neck tape
- rolled sleeve cuff secured with a tack
- machine wash cold; tumble dry low
- made in China

Sizes: Ladies XXS - 2XL



AVAILABLE COLORS



BLACK
(BLK)



NAVY
(NAV)





\$89 PRACTICE JACKET S E

MSRP \$38.85 LADIES/\$34.85 YOUTH

Morning runs are a treat in our cute and comfy activewear Practice Jacket for ladies. Made to fit an active lifestyle, this sporty full-zip jacket can get you through those workouts that require greeting the crisp morning breeze. Made from cotton and spandex fabric blends, this jacket is designed with a slightly snug fit that has the ability to stretch accordingly for activities. Pair it with leggings, sneakers, and a tee/tank to achieve a sporty, active look.

PRODUCT DETAILS

- 6.5 oz., 90% cotton, 10% spandex
- cadet collar
- full front zipper
- kangaroo pocket
- machine wash cold; tumble dry low
- made in Guatemala

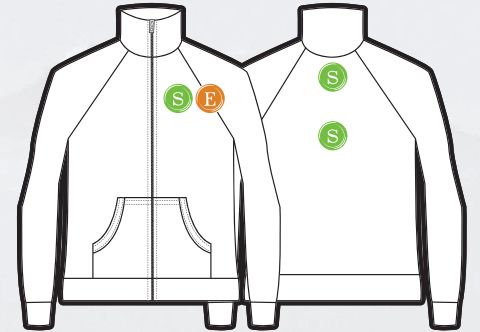
Sizes: Ladies XS - 2XL, Youth YS - YL



AVAILABLE COLORS



EMBELLISHMENT PLACEMENTS



S95 STUDIO JACKET S E

MSRP \$48.85 LADIES/\$42.85 YOUTH

After yoga class. During a breezy 5K run. On the city streets. Our Studio Jacket is always ready to go. Made from a moisture-wicking performance fabric that moves with you. Added ventilation via mesh inserts at back yoke and sleeves. Super functional with two zippered pockets, full-zip front and thumbhole cuffs.

EMBELLISHMENT PLACEMENTS



PRODUCT DETAILS

- 6.8 oz., 88% poly, 12% spandex body; 5.8 oz., 90% poly, 10% spandex side and back mesh inserts
- stretches with your every move
- body-mapped ventilation
- machine wash cold; tumble dry low
- made in China

Sizes: Ladies XS - 2XL, Youth YS - YL



AVAILABLE COLORS



NEW!

BW8501 EVEREST HALF ZIP ^E

MSRP \$68.85

So cozy and warm, the Everest Half-Zip Pullover also looks as good as it feels. The poly Everest fleece body features matte tonal bindings that contrast with the body. A foldover bottom opening has elastic set in between the folds for a snug fit, and inner drawcord provides added adjustability to keep the cold out. Welt pockets complete the look.

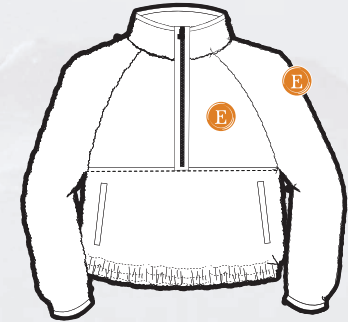
PRODUCT DETAILS

- 8.4 oz., 100% poly Everest fleece
- matte tonal bindings
- foldover bottom opening with elastic set in between folds
- dry clean
- made in China

Sizes: Ladies XXS - 2XL



EMBELLISHMENT PLACEMENTS



AVAILABLE COLORS





Peace and Quiet...

"Life sucks a lot less when you add mountain air, a campfire and some peace and quiet." - Brooke Hampton

BOXERCRAFT®
your life. your spirit.™



Q10 SHERPA QUARTER ZIP PULLOVER ^E

MSRP \$68.85 ADULT / \$55.85 YOUTH

How can plush Sherpa fleece make you feel? Toasty warm. Really comfortable. Adventure ready. Styled with a half-moon back yoke and twill taping inside neckline. Zip to the top or keep it relaxed with the collar open.

PRODUCT DETAILS

- 8.9 oz., 100% poly Sherpa
- chill-busting warmth
- recommend dry cleaning; machine wash cold; tumble dry low
- made in China

Sizes: Adult XS-3XL, Youth* YS - YL

(The dye process used to produce this garment infuses each one with unique character. Please allow for color variations in production.)



AVAILABLE COLORS



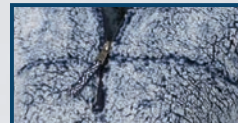
NAVY
(NAV)



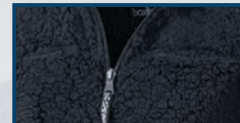
DESERT CAMO
(DCM)



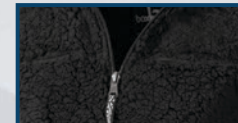
FROSTY CHOCOLATE
(FCH)



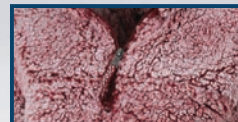
FROSTY NAVY*
(FNV)



CHARCOAL
(CHA)



BLACK
(BLK)



FROSTY GARNET*
(FGN)



FROSTY GREY*
(FGR)

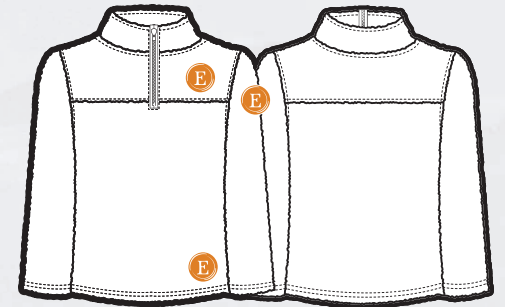


FROSTY HUNTER
(FHU)



NATURAL
(NAT)

EMBELLISHMENT PLACEMENTS

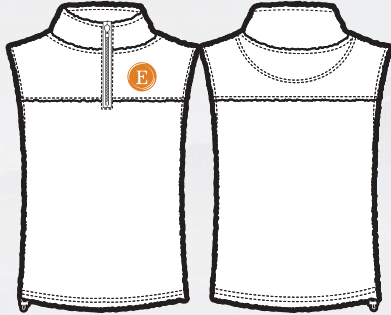


Q11 SHERPA VEST E

MSRP \$62.85

Stay toasty warm to the core via our Sherpa Full-Zip Vest. Details matter, like handwarmer pockets, cinch drawcord bottom, half-moon back yoke and twill taping inside neckline. Zip to the top or keep it relaxed with the collar folded down. However you wear it (or layer it), you'll be glad to have this plush Sherpa fleece vest handy during cold season.

EMBELLISHMENT PLACEMENTS



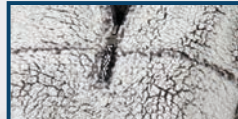
PRODUCT DETAILS

- 8.9 oz., 100% poly Sherpa
- chill-busting warmth
- recommend dry cleaning; machine wash cold; tumble dry low
- made in China

Sizes: Ladies XS-2XL

(The dye process used to produce this garment infuses each one with unique character. Please allow for color variations in production.)

AVAILABLE COLORS



FROSTY GREY
(FGR)



CLICK FOR
MODEL VIDEO





Q12 FULL ZIP SHERPA ^E

MSRP \$68.85

Be adventure ready and stay toasty warm via our Sherpa Full Zip Jacket. Details matter, like handwarmer pockets, cinch drawcord bottom, elasticized cuffs and half moon facing at back neck. Zip to the top or keep it relaxed with the collar open. However you wear it, you'll be glad to have this plush Sherpa fleece jacket handy during cold season.

PRODUCT DETAILS

- 8.9 oz., 100% poly Sherpa
- chill-bursting warmth
- recommend dry cleaning; machine wash cold; tumble dry low
- made in China

Sizes: Ladies XS - 3XL

(The dye process used to produce this garment infuses each one with unique character. Please allow for color variations in production.)

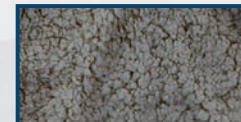
AVAILABLE COLORS



NATURAL
(NAT)



CHARCOAL
(CHA)



FROSTY GREY
(FGR)

EMBELLISHMENT PLACEMENTS





Rest Is Not Idleness.

“Rest is not idleness, and to lie sometimes on the grass under trees on a summer’s day, listening to the murmur of the water, or watching the clouds float across the sky, is by no means a waste of time.” - John Lubbock

BOXERCRAFT®
your life. your spirit.™

Our Flannel Story...

For 35 years, our Flannel lounge pants have been the foundation of the Boxercraft brand and a staple of your loungewear style. As part of the never ending chase to be better, faster, stronger we've elevated our Flannel program to new heights. On the surface, it begins with new colors and new patterns but the magic actually begins with the yarn itself.

Every pattern and color is woven from a 100% cotton "super" yarn. It's a high twist yarn that provides increased strength and durability that will stand up to the heavy brushing we use to achieve the amazing soft handfeel. Super yarn also allows for better color saturation delivering vibrancy and longevity to the patterns and it is pre-shrunk to ensure the meticulously crafted fit remains true. When it's time to relax, it's time for the authentic Flannel lounge pant from Boxercraft.

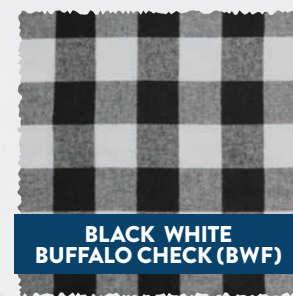
BOXERCRAFT
your life. your spirit.™

Buffalo Check

Hunter Grey new color add to this timeless classic. Neon pattern now same size as Buffalo Check.



RED BLACK
BUFFALO CHECK (RBB)



BLACK WHITE
BUFFALO CHECK (BWF)



ROYAL BLACK
BUFFALO CHECK (RKB)



CHARCOAL BLACK
BUFFALO CHECK (CKB)



GREEN OXFORD
BUFFALO CHECK (BCG)



NEON
BUFFALO CHECK (BNE)

Field Day Plaid

Minimalist approach to a modern pattern. Bright color palette with white and tonal intersecting lines.



NAVY
FIELD DAY (FD1)



KELLY
FIELD DAY (FD2)



ROYAL
FIELD DAY (FD3)



ORANGE
FIELD DAY (FD4)



CRIMSON
FIELD DAY (FD5)

Heritage Plaid

Top selling colors added to one of our top selling patterns.



HERITAGE
BLACK PLAID (HEB)



HERITAGE CAROLINA
BLUE PLAID (HNC)



HERITAGE
GARNET PLAID (HGP)



HERITAGE
HUNTER PLAID (HEH)



HERITAGE
MAROON PLAID (HEM)



HERITAGE NAVY
ORANGE PLAID (HOG)



BLACKWATCH
PLAID (BPD)

Specialty Plaid

An instant classic with bold colors.

Metro Plaid

Bold yet sophisticated plaid 3 color pattern.



ORANGE INDIGO
METRO PLAID (MP1)



ORCHID
METRO PLAID (MP2)

Tomboy Plaid

Beautifully crafted windowpane plaid with contrasting lines.



OXFORD
TOMBOY PLAID (TB1)



CHARCOAL LAVENDER
TOMBOY PLAID (TB2)



NAVY PINK
TOMBOY PLAID (TB3)

Sophia Plaid

Vertical and horizontal lines matching in perfect symmetrical pattern.



LAVENDER
SOPHIA PLAID (SP1)



TEAL
SOPHIA PLAID (SP2)



ORCHID
SOPHIA PLAID (SP3)

Essential Plaid

Tried and true patterns that never go out of style.



NAVY COLUMBIA
PLAID (NCP)



NAVY GOLD
PLAID (NGP)



RED BLUE
PLAID (RBU)



BLACK GOLD
PLAID (BGO)



NAVY SILVER
PLAID (NSP)



PURPLE WHITE
PLAID (PWP)



ROYAL SILVER
PLAID (RSV)

NEW!



BW6620 HALEY FLANNEL PANT S E

MSRP \$29.85

The new and improved Flannel pant has arrived! The Haley pant builds on our 35 years of expertise in creating incredible loungewear. Built from our new “Super” yarn, the classic 100% cotton Flannel fabric has a beautifully soft handfeel, luxurious drape, vibrant color retention and outstanding durability. The 4.3 ounce weight is perfect for year round comfort whether you have barefoot mornings or a chill in the air. The styling and fit have been refined and expertly crafted for “Her” and we’ve extended sizes down to XXS. Adjust the fit with coordinating external tie at the waist. And you can’t have pull-on Flannel pants without handy side pockets. In so many color combos, you’re covered every day of the week.

PRODUCT DETAILS

- 4.3 oz., 100% cotton flannel
- folded waistband
- twill drawcord
- Welt pockets with self pocket bags
- machine wash cold, tumble dry low
- made in Guatemala

Sizes: Ladies XXS - 2XL



EMBELLISHMENT PLACEMENTS



AVAILABLE COLORS



RED BLACK BUFFALO CHECK (RBB)



BLACK/WHITE BUFFALO CHECK (BWF)



ROYAL BUFFALO CHECK (RKB)



CHARCOAL BLACK BUFFALO CHECK (CKB)



GREEN CHARCOAL BUFFALO CHECK (BCG)



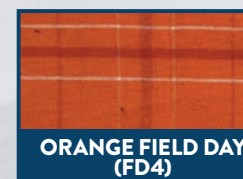
NAVY FIELD DAY (FD1)



KELLY FIELD DAY (FD2)



ROYAL FIELD DAY (FD3)



ORANGE FIELD DAY (FD4)



CRIMSON FIELD DAY (FD5)



HERITAGE BLACK PLAID (HEB)



HERITAGE CAROLINA BLUE (HNC)



HERITAGE GARNET PLAID (HGP)



HERITAGE HUNTER PLAID (HEH)



HERITAGE MAROON PLAID (HEM)



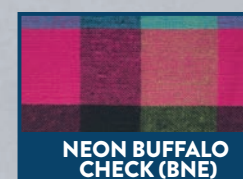
HERITAGE NAVY ORANGE PLAID (HOG)



ORANGE INDIGO METRO PLAID (MP1)



ORCHID METRO PLAID (MP2)

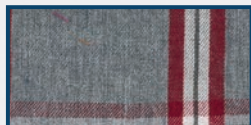


NEON BUFFALO CHECK (BNE)



BLACKWATCH (BPD)

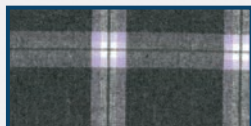
AVAILABLE COLORS (continued)



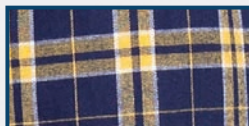
OXFORD RED
TOMBOY PLAID (TB1)



NAVY COLUMBIA
PLAID (NCP)



CHARCOAL LAVENDER
TOMBOY PLAID (TB2)



NAVY GOLD PLAID
(NGP)



NAVY PINK TOMBOY
PLAID (TB3)



NAVY SILVER PLAID
(NSP)



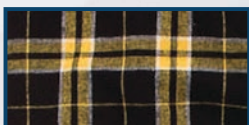
LAVENDER SOPHIA
PLAID (SP1)



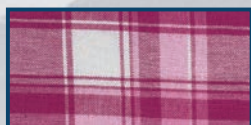
PURPLE WHITE PLAID
(PWP)



TEAL SOPHIA PLAID
(SP2)



BLACK GOLD PLAID
(BGO)

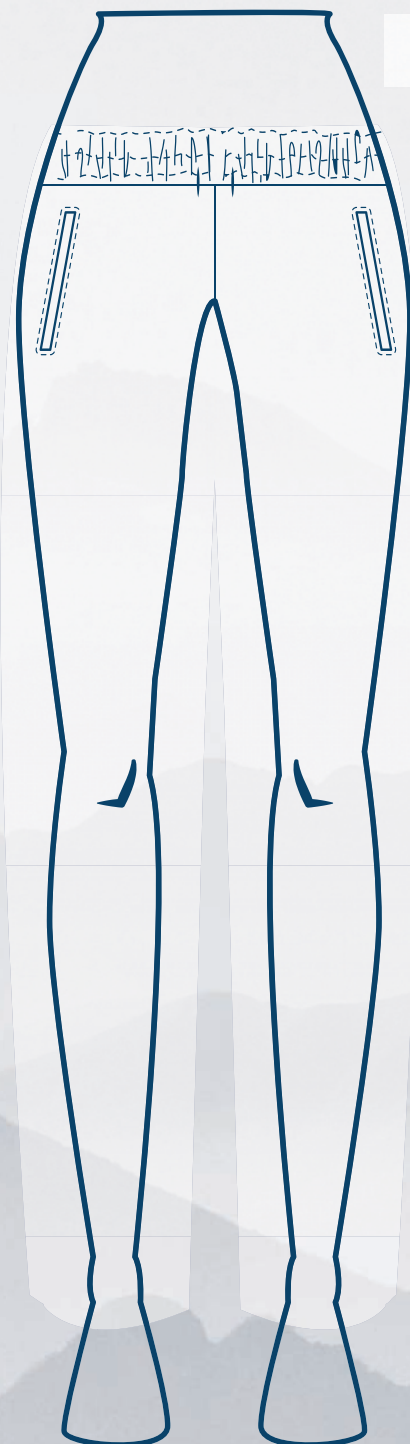


ORCHID SOPHIA
PLAID (SP3)



ROYAL SILVER PLAID
(RSV)

- BW6620



Super Yarn...

INCREASED DURABILITY:

- The twist of the yarn changed during knitting. Increasing strength and durability. (Yarn is pre-shrunk)

BRIGHTER COLORS:

- Super yarn has better color saturation resulting in brighter colors and improved color fastness.

AWESOME HANDFEEL:

- The increased durability of the yarn results in more fabric brushing for an even softer feel.

True Ladies fit...

FIT/CONSTRUCTION DETAILS:

- New BW6620 is designed and constructed for a true relaxed ladies fit.

BOXERCRAFT
your life. your spirit.™

NEW!



BM6624 HARLEY FLANNEL PANT S E

MSRP \$29.85

The new and improved Flannel pant has arrived! The Harley pant builds on our 35 years of expertise in creating incredible loungewear. Built from our new "Super" yarn, the classic 100% cotton Flannel fabric has a beautifully soft handfeel, luxurious drape, vibrant color retention and outstanding durability. The 4.3 ounce weight is perfect for year round comfort whether you have barefoot mornings or a chill in the air. The styling and fit have been refined and expertly crafted for "Him" and we've extended sizes down to XXS to accommodate a broad range of customers. Adjust the fit with coordinating internal tie at the waist. And you can't have pull-on Flannel pants without handy side pockets. In so many color combos, you're covered every day of the week.

PRODUCT DETAILS

- 4.3 oz., 100% cotton flannel
- folded waistband
- twill drawcord • functional fly
- Welt pockets with self pocket bags
- machine wash cold, tumble dry low
- made in Guatemala



CLICK FOR MODEL VIDEO

EMBELLISHMENT PLACEMENTS



AVAILABLE COLORS



RED BLACK BUFFALO CHECK (RBB)



BLACK/WHITE BUFFALO CHECK (BWF)



ROYAL BUFFALO CHECK (RKB)



CHARCOAL BLACK BUFFALO CHECK (CKB)



GREEN CHARCOAL BUFFALO CHECK (BCG)



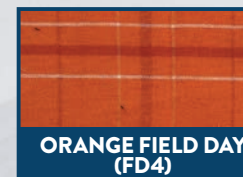
NAVY FIELD DAY (FD1)



KELLY FIELD DAY (FD2)



ROYAL FIELD DAY (FD3)



ORANGE FIELD DAY (FD4)



CRIMSON FIELD DAY (FD5)



HERITAGE BLACK PLAID (HEB)



HERITAGE CAROLINA BLUE (HNC)



HERITAGE GARNET PLAID (HGP)



HERITAGE HUNTER PLAID (HEH)



HERITAGE MAROON PLAID (HEM)



HERITAGE NAVY ORANGE PLAID (HOG)



ORANGE INDIGO METRO PLAID (MP1)



ORCHID METRO PLAID (MP2)

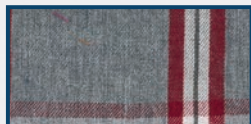


BLACKWATCH (BPD)

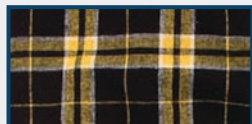


RED BLUE PLAID (RBU)

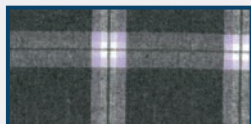
AVAILABLE COLORS (continued)



OXFORD RED
TOMBOY PLAID (TB1)



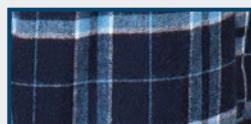
BLACK GOLD PLAID
(BGO)



CHARCOAL LAVENDER
TOMBOY PLAID (TB2)



ROYAL SILVER PLAID
(RSV)



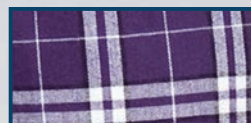
NAVY COLUMBIA
PLAID (NCP)



NAVY GOLD PLAID
(NGP)



NAVY SILVER PLAID
(NSP)



PURPLE WHITE PLAID
(PWP)



- F24

- BW6624

New fits...

FIT/CONSTRUCTION DETAILS:

- *Leg Points have been reshaped for a truer relaxed fit.*
- *The seat and thigh point of measurements have been adjusted for maximum comfort.*
- *The knee and leg measurements have been revised for a more relaxed fit and feel.*

DESIGN DETAILS:

- *Functional fly*
- *Side seam pockets*
- *Self elastic waistbands*

BOXERCRAFT[®]
your life. your spirit.™

NEW!



BW6501 LADIES FLANNEL SHORT S E

MSRP \$24.85

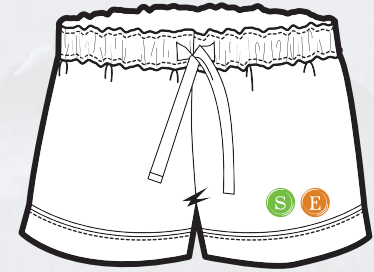
Your go-to for relaxing in comfort, our Flannel Short has feminine details that set it apart from the others. The 2-ply waistband has a satin drawcord, with satin piping at the leg openings. Pure comfort that's completely cute.

PRODUCT DETAILS

- 4.3 oz., 100% cotton flannel
- tonal 3/8" cut and sew satin drawcord
- tonal satin piping at leg opening
- 2 ply waistband with elastic
- machine wash cold with like colors • do not iron
- do not bleach • tumble dry low
- made in Guatemala

Sizes: Ladies XXS - 2XL

EMBELLISHMENT PLACEMENTS



AVAILABLE COLORS



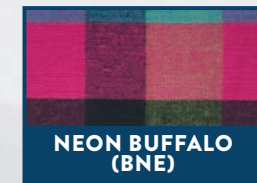
RED BLACK BUFFALO
PLAID (RBB)



BLACK/WHITE
BUFFALO CHECK (BWF)



BLACKWATCH
(BPD)



NEON BUFFALO
(BNE)



LAVENDER SOPHIA
PLAID (SP1)



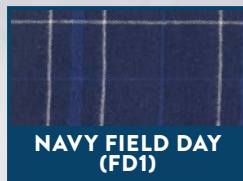
TEAL SOPHIA PLAID
(SP2)



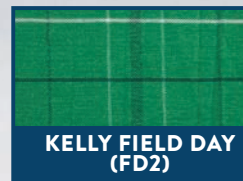
ORCHID SOPHIA
PLAID (SP3)



NAVY SILVER PLAID
(NSP)



NAVY FIELD DAY
(FD1)



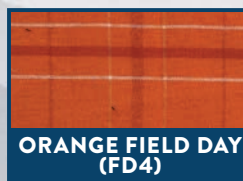
KELLY FIELD DAY
(FD2)



ROYAL FIELD DAY
(FD3)



PURPLE WHITE PLAID
(PWP)



ORANGE FIELD DAY
(FD4)



CRIMSON FIELD DAY
(FD5)



ROYAL SILVER PLAID
(RSV)

BM6701 MEN'S FLANNEL SHORT S E

MSRP \$22.85

Make your base layer a comfortable one with our pure cotton Flannel Boxer. With a seamed waistband and functional fly. Leg openings have a turn-back finish.

EMBELLISHMENT PLACEMENTS



PRODUCT DETAILS

- 4.3 oz., 100% cotton flannel
- seamed waistband
- functional fly
- turnback finish at leg opening
- machine wash cold; tumble dry low
- made in Guatemala

Sizes: Men XS - 3XL

AVAILABLE COLORS



RED BLACK BUFFALO
PLAID (RBB)



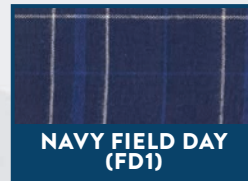
BLACK/WHITE
BUFFALO CHECK (BWF)



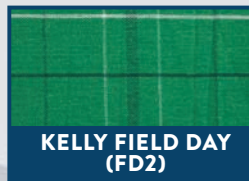
CHARCOAL BLACK
BUFFALO PLAID (CKB)



BLACKWATCH
(BPD)



NAVY FIELD DAY
(FD1)



KELLY FIELD DAY
(FD2)



ROYAL FIELD DAY
(FD3)



ORANGE FIELD DAY
(FD4)



CRIMSON FIELD DAY
(FD5)



NAVY GOLD PLAID
(NGP)



NAVY SILVER PLAID
(NSP)



ROYAL SILVER PLAID
(RSV)



PURPLE WHITE PLAID
(PWP)

NEW!



Our Men's Collection...

The mission of our menswear launch is to bring that Boxercraft casual lifestyle and freedom to relax to HIM. Our collection of wardrobe staples favors timeless style over fashion trends and infuses them with 3 decades of experience finding the softest, most comfortable yarns and fabrics. We focused on those styles that are a part of everyday life...the right t-shirt, the perfect polo, the ultimate fleece sweatshirt and casual layers to create that lived-in style that is authentically Boxercraft.

BOXERCRAFT[®]
your life. your spirit.[™]



BM2101 MEN'S CREW NECK SHORT SLEEVE TEE ^S

MSRP \$19.85

Take your everyday tee game up a notch. The ribbed collar and shoulder-to-shoulder back neck tape give this crew neck tee added durability and structure. Soft cotton or cotton-blend construction makes this a comfortable choice for every day.

EMBELLISHMENT PLACEMENTS



PRODUCT DETAILS

- 4.5 oz., 100% cotton jersey (Ash: 99% cotton, 1% poly; Heather: 90% cotton, 10% poly; CVC colors: 60% cotton/40% poly)
- ribbed collar
- shoulder-to-shoulder back neck tape
- machine wash cold; tumble dry low
- made in India

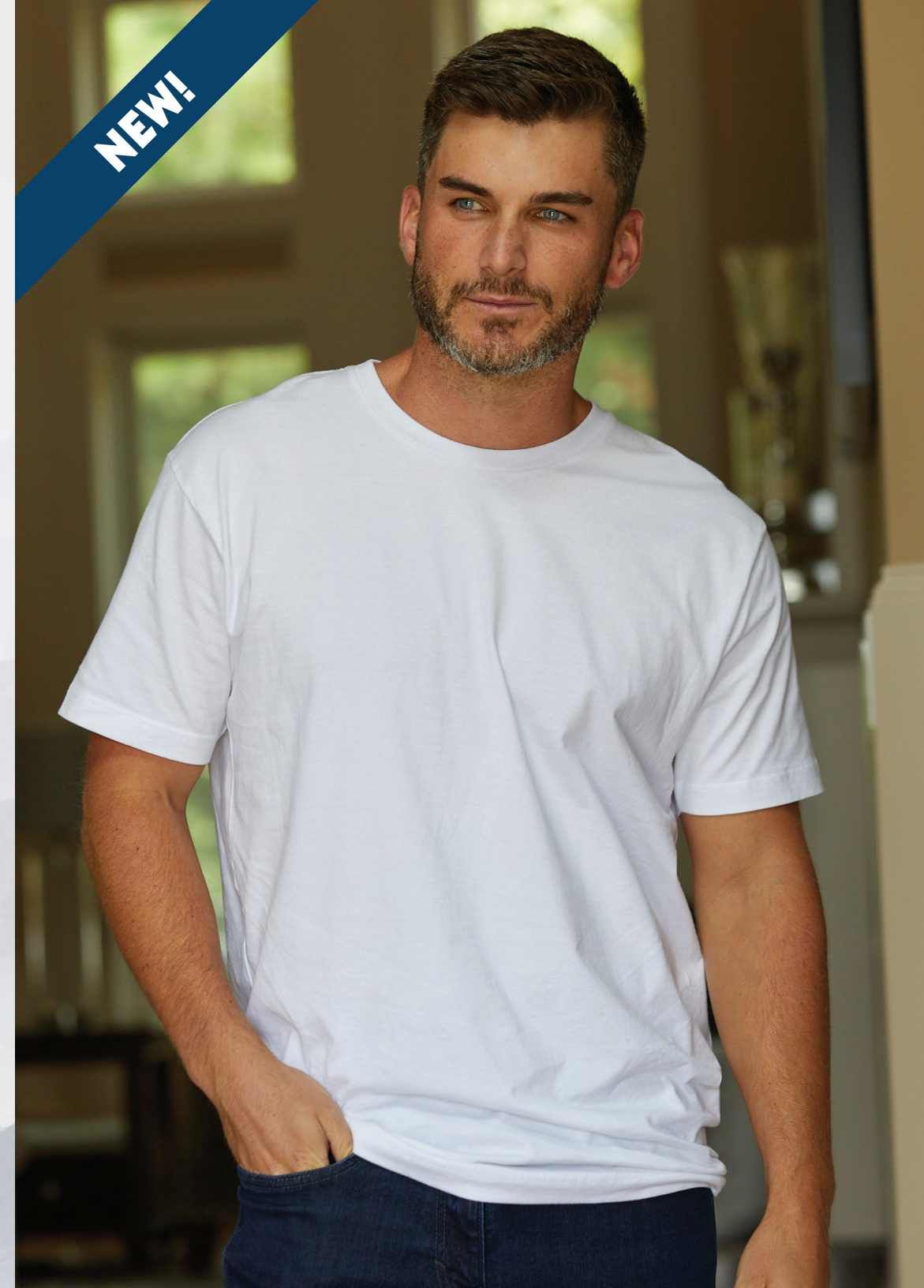
Sizes: Men S - 2XL



AVAILABLE COLORS

 BLACK (BLK)	 FOREST (FG3)	 GRANITE (GNT)
 OXFORD HEATHER (OXH)	 INDIGO (IND)	 MAROON (MAR)
 MILITARY GREEN (GKE)	 NAVY (NAV)	 RED (RED)
 ROYAL (ROY)	 SALT WATER (SWT)	 WHITE (WHT)

NEW!



SEASONAL

BM2102 TRI-BLEND SHORT SLEEVE TEE ^S

MSRP \$24.85

So soft, so stretchy, so comfortable. Our tri-blend tee combines the best elements of three different fibers to create one-of-a-kind, lived-in comfort that you'll reach for over and over. The folded rib band and back neck tape offer added durability. Made of a super soft poly, cotton, rayon knit that resists wrinkles while maintaining its shape.

PRODUCT DETAILS

- 4.3 oz., 50% poly, 38% cotton, 12% rayon
- folded rib band
- back neck tape
- machine wash cold; tumble dry low
- made in Guatemala

Sizes: Men XXS - 3XL



EMBELLISHMENT PLACEMENTS



AVAILABLE COLORS



BM2301 PIQUE POLO ^E

MSRP \$49.85

Every guy needs an exceptional polo to add to their collection, and this one is it. The pique knit goes the distance with durability, comfort and a sporty look. Our polo is finished with a self-fabric color, chest pocket, 22L buttons and side vents on the bottom for added versatility.

EMBELLISHMENT PLACEMENTS



PRODUCT DETAILS

- 5.3 oz., 60% cotton/40% poly
- self-fabric collar
- left chest pocket
- machine wash cold; tumble dry low
- made in China

Sizes: XXS - 3XL



AVAILABLE COLORS

 BLACK (BLK)	 INDIGO (IND)	 OLIVE (OLV)
 OXFORD HEATHER (OXH)	 SALTWATER (SWT)	 WHITE (WHT)



NEW!

BM6101 RIPTIDE HYBRID SHORT ^E

MSRP \$48.85

Swim trunks or workout short? Why decide? Our Rip Tide hybrid short does it all. The lightweight woven shell is poly, spandex for a lightweight, comfortable stretch, with a self waistband with center elastic and inner drawcord for adjustability. Front slash pockets with mesh pocket bag and zippered back pocket.

PRODUCT DETAILS

- 5.1oz., Woven outer shell: 95% Polyester 5% Spandex /92% poly 8% spandex/100% poly mesh
- self waistband with elastic set through center
- braided flat drawcord at interior of waistband
- slash pockets with mesh pocket bag
- back welt pocket with zipper
- machine wash cold; tumble dry low • made in China



Sizes: XXS - 3XL

AVAILABLE COLORS



EMBELLISHMENT PLACEMENTS

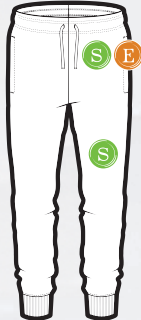


BM6602 MEN'S FLEECE JOGGER S E

MSRP \$42.85

Meet your new favorite Fleece Jogger! So soft, so comfortable, and completely ready for lazy days on the couch or active days outdoors. The folded waistband design has decorative topstitching and drawcords for adjustability. Side-seam front pockets and a back zippered pocket provide plenty of storage for essentials. Folded cuffs at the leg openings complete the look.

EMBELLISHMENT PLACEMENTS



PRODUCT DETAILS

- 7 oz., 50% cotton 50% poly
- folded waistband construction with decorative topstitching
- self drawcords • folded cuff at leg opening
- on seam pockets with self pocket bags
- back welt pocket with zipper closure
- machine wash cold with like colors; tumble dry low
- made in China

Sizes: XXS - 3XL

AVAILABLE COLORS

 BLACK (001)	 OXFORD HEATHER (078)	 LATTE (280)
 NAVY (400)	 ROYAL (425)	 MYSTIC (510)
 OLIVE (310)		



NEW!



NEW!



BM5101 MEN'S FLEECE CREW S E

MSRP \$42.85

Keep your fleece game going strong with our crew neck pullover that's the perfect mix of casual comfort and warmth. The cotton/poly blend is sporty and easy care, with a folded rib neck band, cuffs and bottom. It is accented with a rib triangle detailing and forward-set shoulder seam.

PRODUCT DETAILS

- 7 oz., 50% cotton 50% poly
- folded rib neck band
- folded rib sleeve cuffs and bottom opening
- rib triangle detailing at neck opening
- shoulder seam set forward
- machine wash cold; tumble dry low
- made in China

Sizes: XXS - 3XL



EMBELLISHMENT PLACEMENTS



AVAILABLE COLORS

 BLACK (001)	 OXFORD HEATHER (078)	 LATTE (280)
 NAVY (400)	 ROYAL (425)	 MYSTIC (510)
 RED (660)	 MANDARIN (815)	 OLIVE (310)
 SALTWATER (461)		



BM5201 SULLIVAN QUARTER ZIP ^E

MSRP \$69.85

The simple design of our Sullivan quarter-zip pullover only adds to its versatility. Worn over a favorite tee or alone, you'll love the soft feel and the go-with-anything style. With a self-fabric zipper placket and a faux leather zipper pull. A quilted back yoke and shoulder adds durability. 1x1 folded rib knit cuffs retain their shape. Side vents give a little extra breathing room.

EMBELLISHMENT PLACEMENTS



PRODUCT DETAILS

- 10.6 oz., 100% poly
- self-fabric front zipper placket
- quilted back yoke and shoulder
- machine wash cold; tumble dry low
- made in China

Sizes: XXS - 3XL



AVAILABLE COLORS



BLACK
(BLK)



GREEN HEATHER
(HWZ)



INDIGO
(IND)



NATURAL HEATHER
(NAH)



OXFORD HEATHER
(OXH)



NEW!



BM5202 MEN'S FLEECE QUARTER ZIP

MSRP \$54.85

Who's ready for some cool outdoor adventures? With this Fleece Quarter-Zip Pullover, you will be! The warm cotton, poly blend and casual fleece styling makes this an ideal layering piece. With seamed rib collar and side panels, and folded rib cuffs and bottom band. It also sports contrast piping on the zipper placket.

PRODUCT DETAILS

- 7 oz., 50% cotton 50% poly
- piping detailing at CF zipper opening
- seamed rib side panels
- folded rib sleeve cuffs and bottom band
- self locker patch at CB neck • shoulder seam set forward
- machine wash cold with like colors; tumble dry low
- seamed rib collar with oxford rib at interior on all colorways
- made in China

Sizes: XXS - 3XL



CLICK FOR MODEL VIDEO

EMBELLISHMENT PLACEMENTS



AVAILABLE COLORS



BLACK
(001)



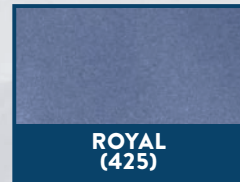
OXFORD HEATHER
(078)



OLIVE
(310)



NAVY
(400)



ROYAL
(425)



MYSTIC
(510)



BM5301 FLEECE BAJA PULLOVER ^E

MSRP \$64.85

Stay in tune with your casual vibe with the Baja fleece pullover. Soft poly fleece has a self-placket that is seamed on top with raw edges for a more natural look. With flat, natural braided drawcords and a 1-ply, 2-piece hood. Back neck tape adds durability, and the kanga pocket keeps hands warm. Side vents.

EMBELLISHMENT PLACEMENTS



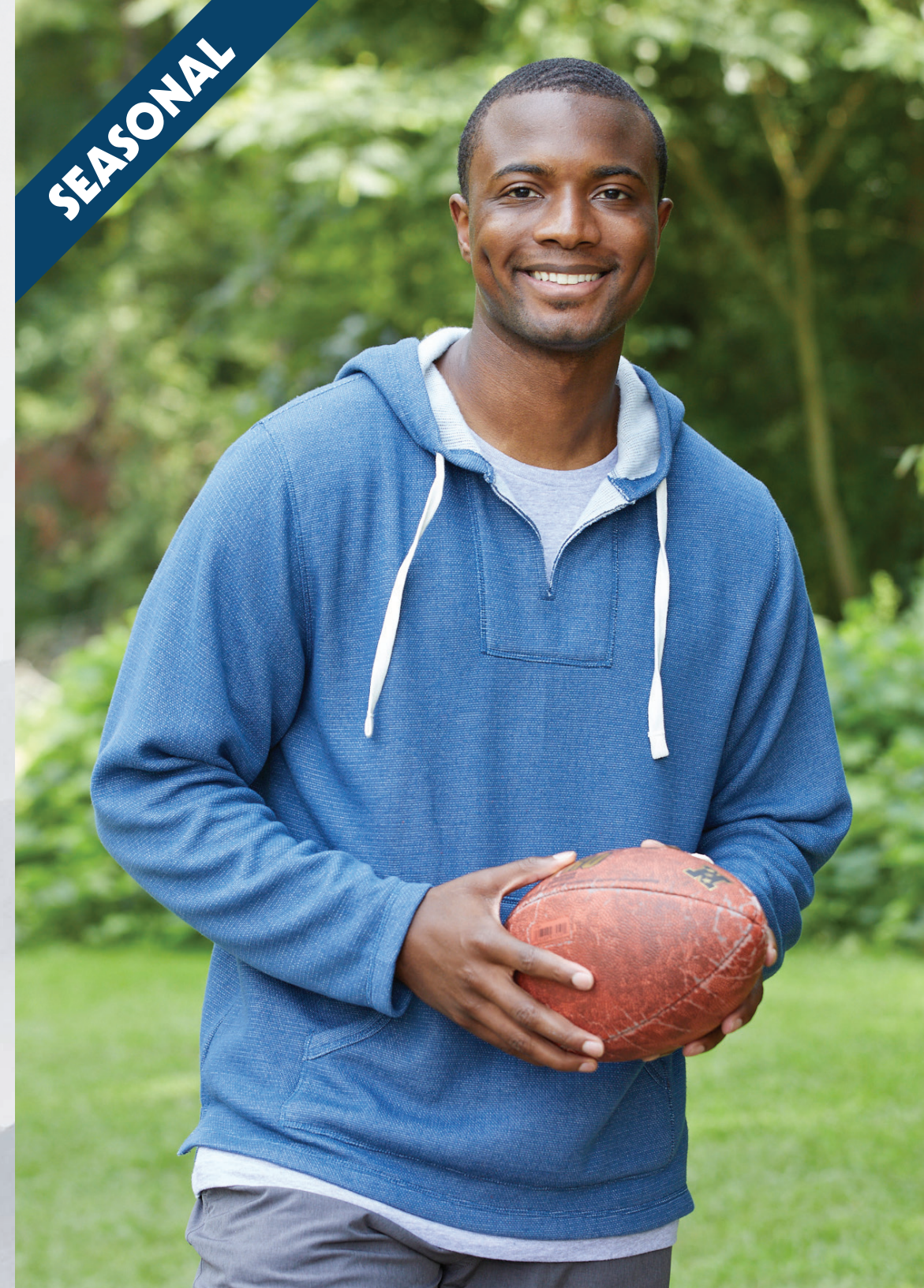
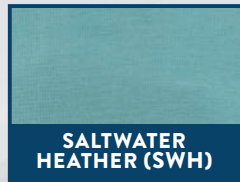
PRODUCT DETAILS

- 10.6 oz., 100% poly
- self-placket with top seaming
- kanga pocket
- machine wash cold; tumble dry low
- made in China

Sizes: XS - 3XL



AVAILABLE COLORS



NEW!

BM5302 MEN'S FLEECE HOOD S E

MSRP \$48.85

Add this cold-weather essential to your everyday lineup and be ready for anything. Our Fleece Hoodie is made from an ultra comfortable and versatile cotton-poly blend, and features a 2-ply hood with drawcords. Folded rib cuffs and bottom opening hold their shape. Kanga pocket keeps hands toasty.

PRODUCT DETAILS

- 7 oz., 50% cotton 50% poly
- 2 ply hood with self lining
- self drawcords
- folded rib sleeve cuffs and bottom opening
- self kanga pocket
- machine wash cold with like colors; tumble dry low
- made in China

Sizes: XXS - 3XL

AVAILABLE COLORS

 BLACK (001)	 OXFORD HEATHER (078)	 LATTE (280)
 NAVY (400)	 ROYAL (425)	 MYSTIC (510)
 RED (660)	 MANDARIN (815)	 OLIVE (310)
 SALTWATER (461)		

EMBELLISHMENT PLACEMENTS



BM8510 MEN'S EVEREST FLEECE PULLOVER ^E

MSRP \$68.85

Cozy up to your new cold-weather best friend. Our quarter-zip Everest Fleece Pullover is both warm and stylish, with a poly sherpa body that has faux leather trim at the zipper and pocket openings and a decorative zipper pull. The kanga pocket keeps hands toasty.

EMBELLISHMENT PLACEMENTS



PRODUCT DETAILS

- 8.4 oz., 100% Everest fleece
- faux leather binding at CF opening
- pocket openings
- decorative zipper pull
- kanga pocket
- machine wash cold with like colors; tumble dry low
- made in China

Sizes: XXS - 3XL

AVAILABLE COLORS



NEW!



SEASONAL



BM8101 ADVENTURE JACKET ^E

MSRP \$88.85

The name says it all. Our Adventure jacket is ready to take on the day while offering lightweight warmth and protection. It has a quilted poly shell with woven arms for stretchable comfort and flexibility. Features a self zipper guard and a zippered chest pocket. Side-seam pockets have lightweight pocket bags.

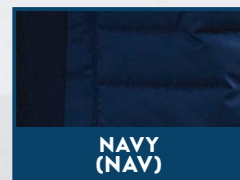
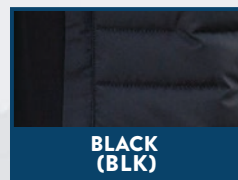
PRODUCT DETAILS

- body: 1.5 oz., 100% poly; Woven sleeves: 11.2 oz., 68% rayon, 28% chinlon, 4% spandex; Fill: 3 oz., 100% poly
- self zipper guard
- zippered chest pocket
- machine wash cold; tumble dry low
- made in China

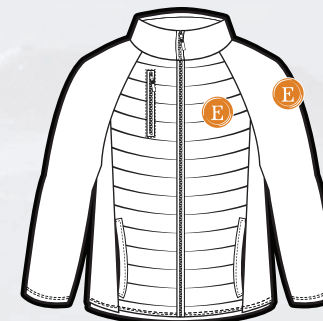
Sizes: XXS - 3XL



AVAILABLE COLORS



EMBELLISHMENT PLACEMENTS



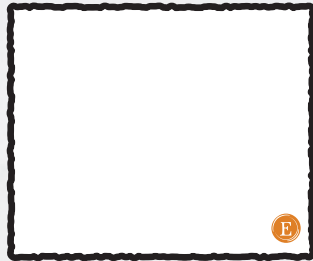
Q21 SHERPA BLANKET

MSRP \$49.85

(Packaging available at additional cost.)

Our Sherpa blanket takes coziness to the next level. We don't mess around. Featuring double-faced Sherpa. Keep this standard size throw blanket at the ready whenever cold weather strikes. Designed with finished edges and a convenient zipper pocket to conceal embroidered backing.

EMBELLISHMENT PLACEMENTS

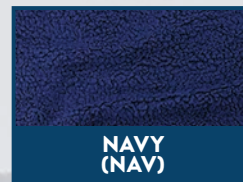
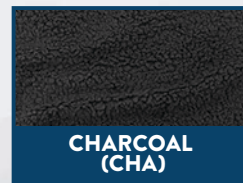


PRODUCT DETAILS

- 7.4 oz. 100% poly double-faced Sherpa
- 50 x 60-inch standard size throw blanket
- machine wash cold, tumble dry low
- made in China

(The dye process used to produce this blanket infuses each one with unique character. Please allow for color variation in production.)

AVAILABLE COLORS





FQ01 EVEREST BLANKET S E

MSRP \$58.85

You don't have to go to Mount Everest to appreciate the warmth of this flannel and Sherpa blanket, but you could. More practical purposes include snuggling on the couch or staying cozy by the campfire. This standard size throw blanket is easy to love in brushed cotton flannel with a plush Sherpa fleece backing for soft warmth without feeling heavy. There's even a zippered corner to conceal embroidery backing. When chilly weather strikes, make sure your new favorite blanket is handy.

PRODUCT DETAILS

- 4.3 oz. brushed cotton flannel backed by 5.9 oz. 100% poly Sherpa
- 50 x 58-inch standard size throw blanket
- self-flannel binding with double-needle coverstitching
- machine wash cold, tumble dry low
- made in China

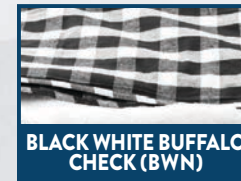
AVAILABLE COLORS



RED BLACK BUFFALO CHECK (RBN)



CHARCOAL BLACK BUFFALO CHECK (CBN)



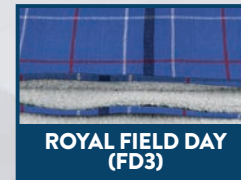
BLACK WHITE BUFFALO CHECK (BWN)



BLACKWATCH (BPD)



NAVY FIELD DAY (FD1)



ROYAL FIELD DAY (FD3)



CRIMSON FIELD DAY (FD5)

EMBELLISHMENT PLACEMENTS

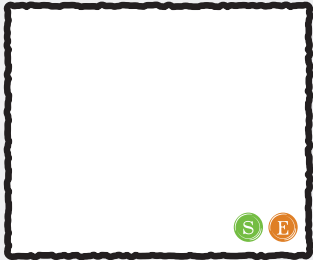


FB250 PREMIUM FLANNEL BLANKET S E

MSRP \$42.85

Remember that blanket you had to have as a kid? Maybe it's still around, or frayed remnants. Meet your new favorite. This go-everywhere plaid blanket is easy to love in double-brushed cotton flannel with a plush fleece backing for soft warmth without feeling heavy. Snuggle on the couch. Stay warm in a cold outdoor stadium. Stretch out and stargaze. If you spill your drink (oops, it happens), just throw this flannel blanket in the washing machine and tumble dry. With bound edges and rounded corners, it will come out looking and feeling like new.

EMBELLISHMENT PLACEMENTS



PRODUCT DETAILS

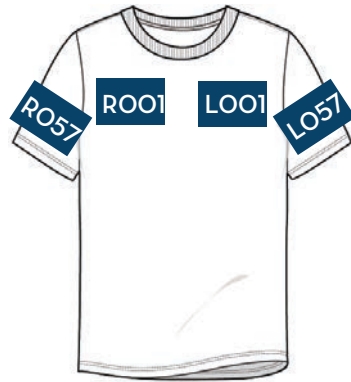
- 4.3 oz. double-brushed, 100% cotton flannel backed by 7 oz. fleece of 50% cotton, 50% poly
- 50 x 60-inch standard size throw blanket
- bound and finished edges
- machine wash cold, tumble dry low
- made in Guatemala

AVAILABLE COLORS

 BLACK WHITE PLAID (BWB)	 NAVY COLUMBIA PLAID (NCN)	 NAVY SILVER PLAID (NSP)
 BLACK GOLD PLAID (BGO)	 NAVY GOLD PLAID (NGV)	 PURPLE WHITE PLAID (PWB)
 GREEN WHITE PLAID (GPB)	 NAVY RED PLAID (NRN)	 NAVY WHITE PLAID (NWN)
 RED WHITE PLAID (RWB)		



EMBELLISHMENT GUIDE



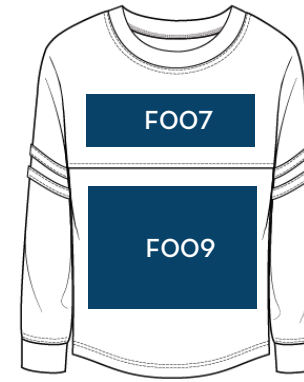
OO1-L/R CHEST:
3" x 3" S E D
O57-SHOULDER SLEEVE:
3" X 3" S



OO4-FRONT CENTER:
Men's 12" x 12" S D
Women's 9" x 9" S D



OO5-FRONT CENTER with POCKET:
12" x 8" S



OO7-UPPER FRONT:
14" x 5" S
OO9-LOWER FRONT:
14" x 12" S



OO3-POCKET:
3" x 3" S
O55-ABOVE POCKET:
3" x 3" S E



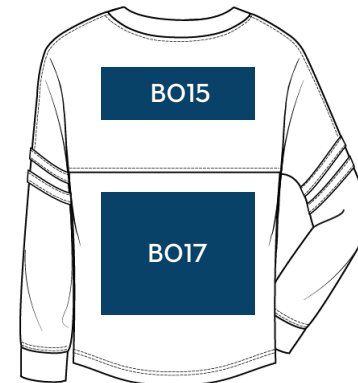
O18-FULL SLEEVE:
Men's 3" x 12" S
Women's 3" x 10" S



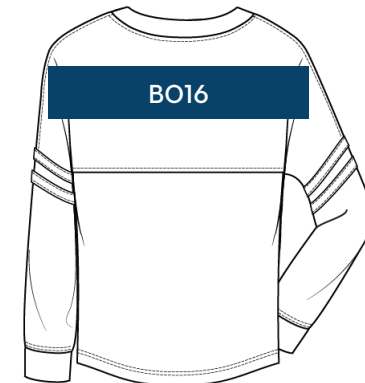
O10-LOWER SHIRT HEM:
Men's 3" x 3" S E



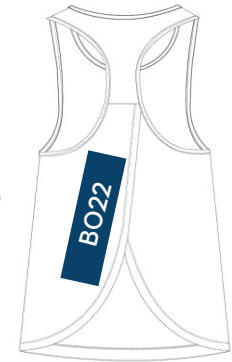
O13-BACK CENTER:
Men's 12" x 12" S D
Women's 9" x 9" S D
O14-UPPER BACK CENTER:
3" x 3" S E



O15-UPPER BACK:
12" x 3" S
O17-LOWER BACK:
12" x 12" S



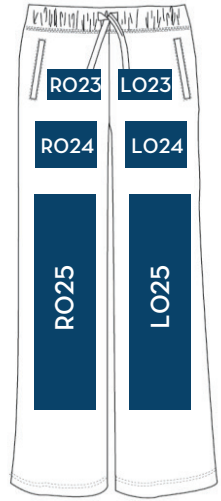
O16-OVERSIZED UPPER BACK:
22" x 7.5" S



O22-BACK ENVELOPE HEM:
2" x 10" S

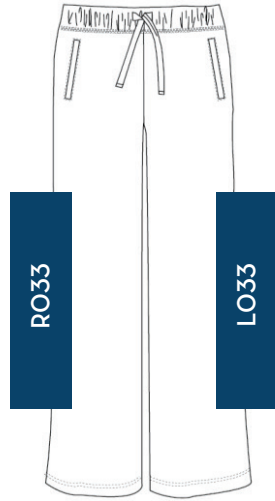
S Screen Print E Embroidery D DTG

Tops



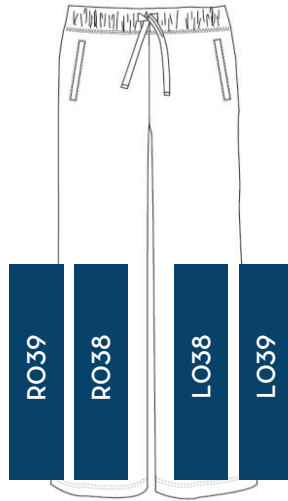
Front

O23-HIP:
 3.5" x 3.5" (S)
 3" x 3" (E)
O24-THIGH:
 4" x 4" (S)
O25-LEG FRONT:
 4" x 18" (S)



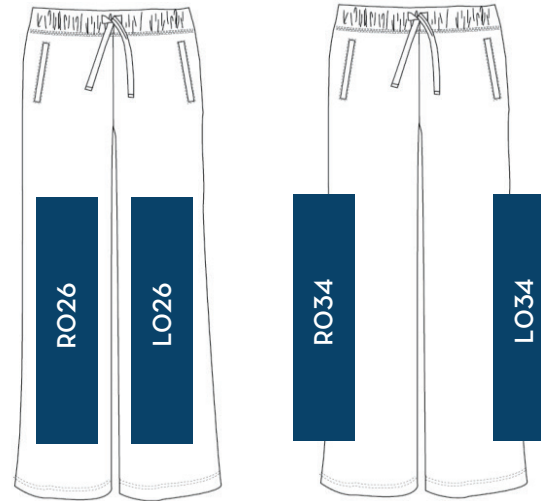
Side

O33-LEG SIDE:
 4" x 18" (S)



Hem

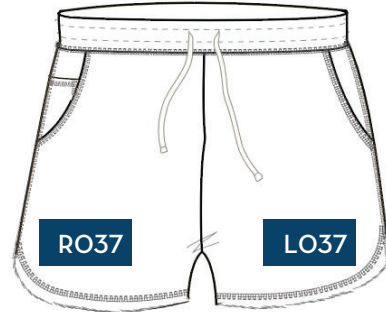
O38-LEG HEM FRONT:
 4" x 18" (S)
O39-LEG HEM SIDE:
 4" x 18" (S)



Oversize

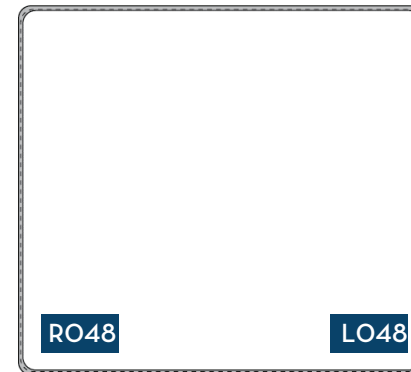
O26-LEG OVERSIZE FRONT:
 5" x 22" (S)
O34-LEG OVERSIZE SIDE:
 5" x 22" (S)

Bottoms



Shorts

O37-LEG HEM:
 3" x 3" (S) (E)



O48-CORNER:
 5" x 5" (S)
 3.5" x 3.5" (E)

Blankets

BOXERCRAFT
your life. your spirit.™

LADIES COLLECTION

	03-54	
BW2101	Ladies Tri-Blend Crew Tee SEASONAL	04
BW2201	Ladies V-Neck Tee NEW	05
T67	Cut It Out Tee	06
BW2501	Adrienne Tank NEW	08
BW2502/T90	Ladies Essential Tank NEW	09
BW2503	Ladies Charm Tank NEW	10
BW4101	Coastal Cover Up NEW	12
BW4102	Caydn Tank Dress SEASONAL	13
BW2401	Willow Tee NEW	14
BW2403	Baby Rib Top NEW	15
BW3166	Payton Tee - Solid Preppy Patch Slub Tee	16
T14	Pom Pom Jersey	18
T15	Cropped Retro Jersey	19
BW2402	Harper Henley NEW	20
R08	Quilted Crew	21

CUDDLE COLLECTION

22-30

BW1301	Cuddle Wrap Top NEW	23
BW1501	Cuddle Hoodie NEW	24
L06	Cuddle Boxy Crew	25
L08	Cuddle Cardigan	26
L09	Cuddle Jogger	27
L10	Cuddle Wide Leg Pant	28
L11	Cuddle Short	29
L12	Cuddle Cowl Pullover	30
BW5201	Dream Fleece Full Zip Hood NEW	32
BW5301	Dream Fleece Pullover Hood NEW	33
BW6601	Dream Fleece Jogger NEW	34
S08	Love 'Em Longer Legging	35
BW6615	Evelyn Pant NEW	36
BW6301	Luna Legging NEW	37
S101	Support Your Team Bra	38
BW6101	Olympia Short NEW	40
BW6102	Basic Sport Short NEW	41
K11	Rally Short	42
R65	Relay Short	43

K01S/K01P

K02S

BW8101

BW8102

S89

S95

BW8501

Q10

Q11

Q12

Reverse Fleece Out Crew	44
Reverse Fleece Out Short	45
Ladies Adventure Jacket SEASONAL	46
Quilted Market Jacket SEASONAL	47
Practice Jacket	48
Studio Jacket	49
Everest Half Zip NEW	50
Sherpa 1/4 Zip Pullover	52
Sherpa Vest	53
Full Zip Sherpa	54

FLANNEL COLLECTION

56-63

BW6620

BM6624

BW6501

BM6701

Haley Flannel Pant NEW	58-59
Harley Flannel Pant NEW	60-61
Ladies Flannel Short NEW	62
Men's Flannel Short NEW	63

MEN'S COLLECTION

64-76

BM2101

BM2102

BM2301

BM6101

BM6602

BM5101

BM5201

BM5202

BM5301

BM5302

BM8510

BM8101

Men's Crew Neck Tee NEW	65
Men's Tri-Blend Tee SEASONAL	66
Pique Polo NEW	67
Riptide Hybrid Short NEW	68
Men's Fleece Jogger NEW	69
Men's Fleece Crew NEW	70
Sullivan 1/4 Zip NEW	71
Men's Fleece 1/4 Zip NEW	72
Fleece Baja Pullover SEASONAL	73
Men's Fleece Hood NEW	74
Men's Everest Fleece Pullover NEW	75
Men's Adventure Jacket SEASONAL	76

BLANKETS

77-79

Q21

FQ01

FB250

Sherpa Blanket	77
Everest Blanket	78
Premium Flannel Blanket	79

EMBELLISHMENT GUIDE

80-81

SIZING GUIDE

Pants, shorts and tops have a +/- 1 1/2" tolerance

BOXERCRAFT

your life. your spirit.

TOPS		BOTTOMS			
LADIES					
SIZES	BUST	SIZES	WAIST	HIPS	INSEAM
XXS (00)	27.5" - 29.5"	XXS (00)	24" - 25.5"	31.5 - 33	28"-29"
XS (0-2)	29.5" - 32.5"	XS (0-2)	25.5" - 26.5"	33" - 35.5"	29" - 30"
S (4-6)	32.5" - 35.5"	S (4-6)	26.5" - 29"	35.5" - 37.5"	30" - 31"
M (8 - 10)	35.5" - 38"	M (8 - 10)	29" - 31.5"	37.5" - 39.5"	31" - 32"
L (12 - 14)	38" - 40.5"	L (12 - 14)	31.5" - 34.5"	39.5" - 41.5"	32" - 33"
XL (16)	40.5" - 43"	XL (16)	34.5" - 38.5"	44" - 46"	33" - 34"
2X (18)	43" - 45.5"	2X (18)	38.5" - 42.5"	46" - 49"	34" - 35"
3X (20)	45.5" - 47"	3X (20)	42.5" - 46"	49" - 52"	35" - 36"
MENS / UNISEX					
SIZES	CHEST	SIZES	WAIST		INSEAM
XXS	29.5" - 32.5"	XXS	25" - 27"		28"-29"
XS	32.5-34"	XS	27"- 29"		29" - 30"
S	34" - 36"	S	29" - 31"		30" - 31"
M	38" - 40"	M	31" - 32"		31" - 32"
L	42" - 44"	L	33" - 34"		32" - 33"
XL	46" - 48"	XL	35" - 36"		33" - 34"
2X	50" - 52"	2X	37" - 38"		34" - 35"
3X	54" - 56"	3X	39" - 40"		36" - 37"
YOUTH / GIRLS / BOYS					
SIZES	CHEST	SIZES	WAIST		INSEAM
S (8 - 10)	25" - 27"	S (8 - 10)	22" - 23"		21" - 23"
M (10 - 12)	28" - 30"	M (10 - 12)	24" - 25"		24" - 26"
L (12-14)	31" - 33"	L (12-14)	26" - 27"		26" - 27"

CHEST
Measure at fullest point

WAIST
Relaxed

INSEAM
Inner leg length is measured from the top of the inside leg down to the bottom edge of inside leg

BM6624 - MEN'S FLANNEL FIT GUIDE

SIZE	XXS	XS	S	M	L	XL	2XL	3XL
Waist Relaxed	26	28	30	31	33	36	38	40
Front Rise	12 3/4	13 1/4	13 3/4	14 1/4	14 3/4	15 1/4	15 3/4	16 1/4
Back Rise	15 1/2	16	16 1/2	17	17 1/2	18	18 1/2	19
Inseam	28 1/4	28 3/4	29 1/4	29 3/4	30 1/4	30 3/4	31 1/4	31 3/4

BW6620 - LADIES FLANNEL FIT GUIDE

SIZE	XXS	XS	S	M	L	XL	2XL
Waist Relaxed	25	26	28	30	33	36 1/2	38
Front Rise	10 1/4	10 3/4	11 1/4	11 3/4	12 1/4	12 3/4	13 1/4
Back Rise	14 3/4	15 1/4	15 3/4	16 1/4	16 3/4	17 1/4	17 3/4
Inseam	26 1/4	28 3/4	29 1/4	29 3/4	30 1/4	30 3/4	31 1/4



LEARN TODAY. LEAD TOMORROW.

BOXERCRAFT

Every hard-working student deserves a real opportunity to earn an affordable, high-quality degree or credential. America's students know what they want out of college. They want an education that will set them on a path to success. They want control of their future, without decades of overwhelming debt. They want a college degree that will help them thrive, support a family, shape the world and contribute to their communities. For them, college is literally a transformative time in their lives that shapes their future in profoundly positive ways.

Our mission is to see the current numbers of 85/66/41 (Graduate High School/Enroll in College/Finish in 4 Years) move to 85/85/85...PROJECT 85. Great! How do we do that? We believe it starts with democratizing the information and leveraging technology to create a platform that allows our students to easily accomplish the following:

- **Understand who they are, where their strengths lie and identify career paths that work for them (Phase 1)**
- **Understand the schools that work for them in terms of the curriculum for their chosen career, their geographic location and their budget (Phase 1)**
- **Understand the various scholarships, grants and loans available to them (Phase 2)**

Imagine an app on their phone that asks questions and presents information based on their answers... quick, intuitive, focused and at their fingertips! The good news is that we've identified the technology and are in the process of building it out. The bad news is that we're not finished yet. The app will be free and the plan is to make the same content accessible on the web from any computer anywhere to ensure we can reach as many kids as possible.

We'll keep you updated on our progress. If Project 85 speaks to you and you'd like to help, you can buy something from us. You'll notice all of our retail prices end in \$0.85. That last \$0.85 of every item is committed to Project 85 and building the technology in phase 1 and then building our own Project 85 Scholarship Program in phase 2. Watch for custom Project 85 products where 100% of the proceeds will be directed to the program.

We understand the size of the mountain we're trying to climb and the effort required to get there. Our team is ready for the challenge.

Learn Today. Lead Tomorrow.



#boxercraft @boxercraft